

NOTES:

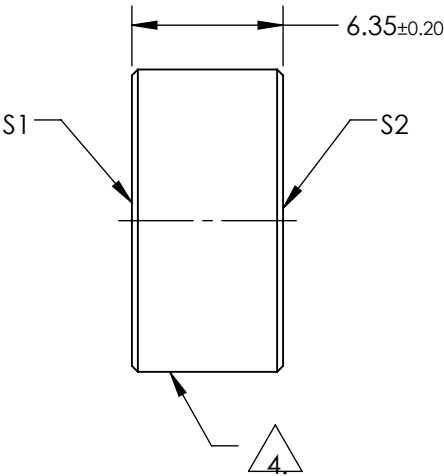
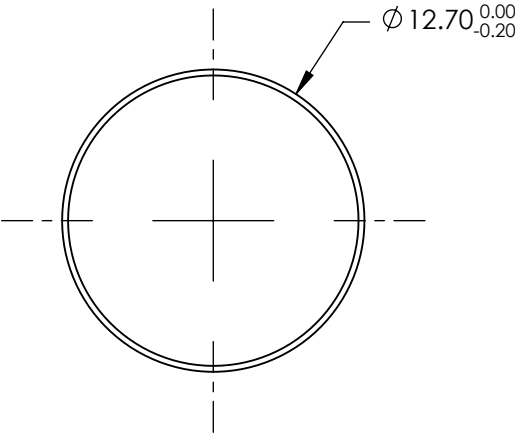
1. SUBSTRATE:
FUSED SILICA
2. S2 TO BE PARALLEL TO S1 TO WITHIN <3ARCMIN
3. COATING (APPLY ACROSS COATING APERTURE)
S1: BROADBAND
R(AVG) ≥98% from 340 - 488nm @ 0 deg AOI
R(AVG) ≥98% from 320 - 450nm @ 45 deg AOI for All Polarizations
R(AVG) ≥99% from 320 - 450nm @ 45 deg AOI For S-Polarization

DAMAGE THRESHOLD,
PULSED: 0.5J/cm², 20ns , 20Hz @ 355nm

S2: NONE

4. FINE GROUND SURFACE

5. CLEAR APERTURE AND COATING APERTURE ARE CENTERED ON SURFACE
6. SURFACE QUALITY SPECIFICATIONS APPLY ACROSS CLEAR APERTURE
7. ROHS: COMPLIANT



**FOR INFORMATION ONLY:
DO NOT MANUFACTURE
PARTS TO THIS DRAWING**

SPECIFICATIONS SUBJECT TO CHANGE WITHOUT NOTICE
DIMENSIONS ARE FOR REFERENCE ONLY

	S1	S2
SHAPE	PLANO	PLANO
SURFACE QUALITY	20-10	COMMERCIAL POLISH
SURFACE FLATNESS	λ/10 (BEFORE COATING)	N/A
CLEAR APERTURE	Ø11.43	N/A
COATING APERTURE	Ø11.70	N/A
BEVEL	PROTECTIVE AS NEEDED	PROTECTIVE AS NEEDED



ALL DIMS IN

mm



Edmund Optics®

TITLE

MIRROR BROADBAND UV 12.7mm DIA

DWG NO

39389

SHEET
1 OF 1