

NOTES:

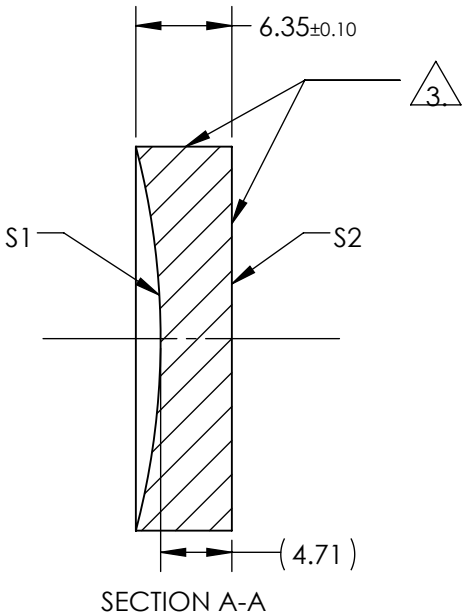
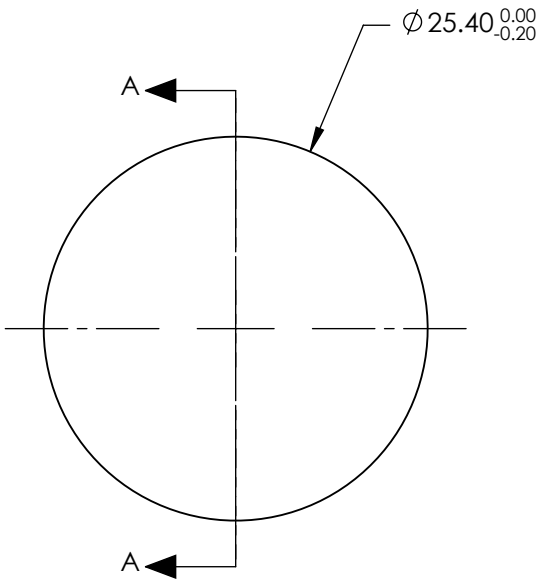
- 1. SUBSTRATE:
Fused Silica
- 2. COATING (APPLY ACROSS COATING APERTURE)
S1: NONE

S2: NONE

3. FINE GRIND SURFACE

- 4. POWER, IRREGULARITY, AND SURFACE QUALITY SPECIFICATIONS APPLY
ACROSS CLEAR APERTURE
- 5. ROHS: COMPLIANT

**FOR INFORMATION ONLY:
DO NOT MANUFACTURE
PARTS TO THIS DRAWING**



	S1	S2
SHAPE	CONCAVE	PLANO
RADIUS	50.00	INFINITY
SURFACE QUALITY	20-10	N/A
CLEAR APERTURE	Ø22.86	N/A
COATING APERTURE	N/A	N/A
POWER AT 632.8nm	2 RINGS	N/A
IRREGULARITY AT 632.8nm	0.10 WAVE	N/A
BEVEL	PROTECTIVE AS NEEDED	PROTECTIVE AS NEEDED

SPECIFICATIONS SUBJECT TO CHANGE WITHOUT NOTICE
DIMENSIONS ARE FOR REFERENCE ONLY

Edmund Optics®



ALL DIMS IN

mm

TITLE

25.4mm Dia. x 25mm EFL, Uncoated,
Concave Laser Mirror

DWG NO

39973

SHEET
1 OF 1