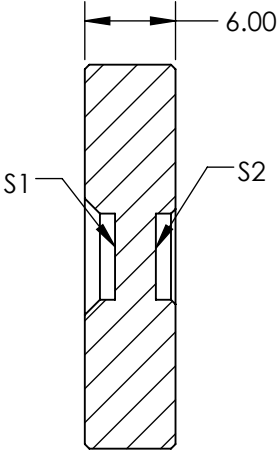
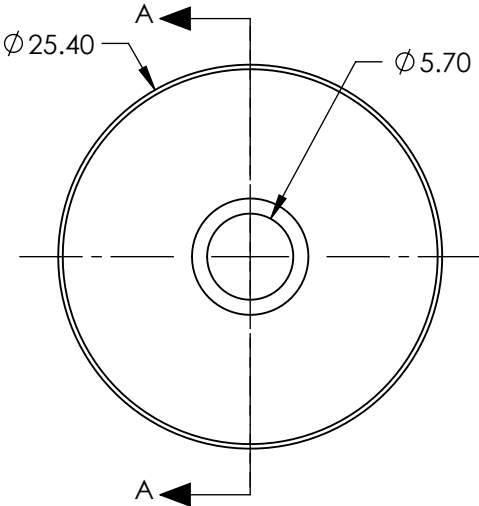
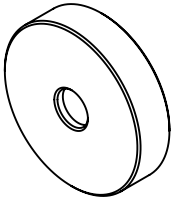


NOTES:

- 1. CRYSTAL TYPE: BBO
- 2. SURFACE S2 TO BE PARALLEL TO SURFACE S1 TO WITHIN <20 ARCSEC
- 3. COATING (APPLY ACROSS COATING APERTURE)
DAMAGE THRESHOLD, PULSED: >1 GW/cm² @ 1064nm, 10ns
S1: 400 - 800nm PROTECTIVE COATING
S2: 266nm PROTECTIVE COATING
- 4. ORIENTATION (Θ/φ)°: 44.3/90
- 5. RoHS: COMPLIANT



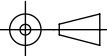
SECTION A-A

**FOR INFORMATION ONLY:
DO NOT MANUFACTURE
PARTS TO THIS DRAWING**

SPECIFICATIONS SUBJECT TO CHANGE WITHOUT NOTICE
DIMENSIONS ARE FOR REFERENCE ONLY

	S1	S2
SHAPE	PLANO	PLANO
SURFACE FLATNESS	λ/8	λ/8
SURFACE QUALITY	20-10	20-10
CLEAR APERTURE	Ø5.70	Ø5.70
BEVEL	PROTECTIVE AS NEEDED	PROTECTIVE AS NEEDED

THIRD ANGLE
PROJECTION



ALL DIMS IN

mm



Edmund Optics®

TITLE

6 x 6 x 0.2mm, 800nm THG, TYPE I BBO
NONLINEAR CRYSTAL

DWG NO

11170

SHEET
1 OF 1