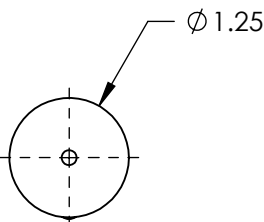
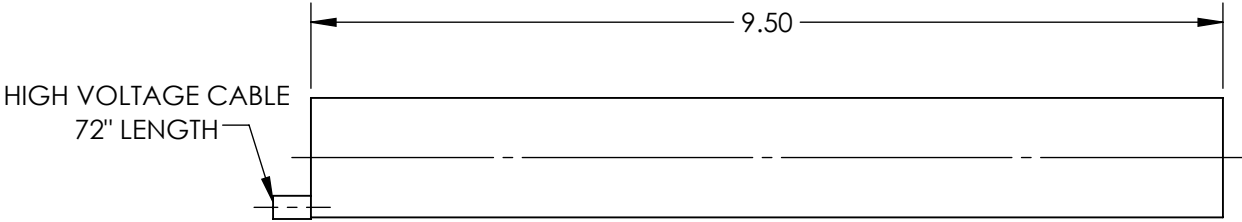


NOTES:
1. RoHS: EXEMPT

FOR INFORMATION ONLY:
DO NOT MANUFACTURE
PARTS TO THIS DRAWING



	VALUE
WEIGHT (lbs)	0.54
WARM-UP TIME	10
RMS NOISE	30 Hz - 10 MHz: 0.1%
OPERATING TEMPERTURE (°C)	-40 to +70
OPERATING HUMIDITY	0 TO 100%, NON-CONDENSING
MODE PURITY (TEM00)	>95%
MINIMUM OUTPUT POWER, TEM00 (mW)	2
MAXIMUM DRIFT	MEAN POWER OVER 8 HRS: ± 2.5
LONGITUDINAL MODE SPACING, NOMINAL (MHz)	730
LASER CLASS - CDRH	IIIa
COLOR	RED
POINTING STABILITY AFTER WARM UP (mrad/°C)	N/A
POINTING STABILITY (mrad/°C)	FROM COLD START, 25°: <0.1
OUTPUT POWER (mW)	2
BEAM DIAMETER (mm)	0.63
BEAM DIVERGENCE (mrad)	1.30 ± 3
POLARIZATION	500:1
STATIC ALIGNMENT	CENTERED TO OUTER CYLINDER: $\pm 0.01"$ PARALLEL TO OUTER CYLINDER: ± 1.0 MRAD

SPECIFICATIONS SUBJECT TO CHANGE WITHOUT NOTICE
DIMENSIONS ARE FOR REFERENCE ONLY

EO® **Edmund Optics**®

THIRD ANGLE PROJECTION		TITLE	Model 1103P, 2mW Linear Polarization, Lumentum HeNe Laser		
		DWG NO	64104	SHEET 1 OF 1	