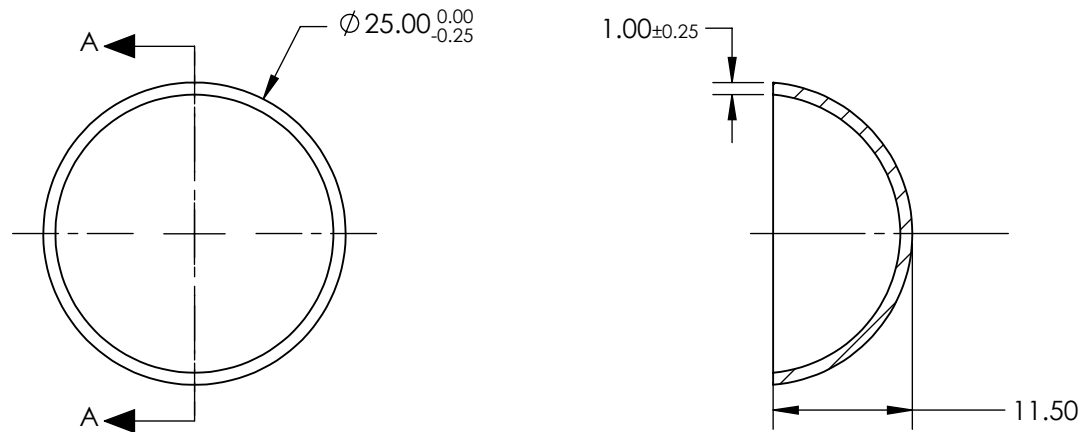


NOTES:

1. SUBSTRATE:  
N-BK7
2. COATING (APPLY ACROSS COATING APERTURE)  
NONE
3. SURFACE QUALITY: 60-40
4. WAVELENGTH RANGE: 350 - 2200 nm

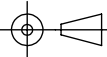


SECTION A-A

SPECIFICATIONS SUBJECT TO CHANGE WITHOUT NOTICE  
DIMENSIONS ARE FOR REFERENCE ONLY

**FOR INFORMATION ONLY:  
DO NOT MANUFACTURE  
PARTS TO THIS DRAWING**

**EO<sup>®</sup> Edmund Optics<sup>®</sup>**

|  |    |        |   |              |
|--|----|--------|---|--------------|
| THIRD ANGLE PROJECTION  |    | TITLE  | 25mm Diameter x 1mm Thickness, N-BK7 Glass Dome |              |
| ALL DIMS IN  | mm | DWG NO | 64496   | SHEET 1 OF 1 |