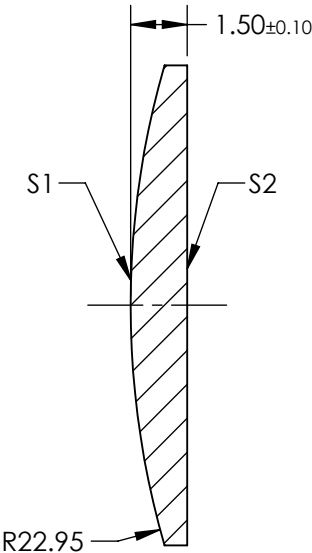
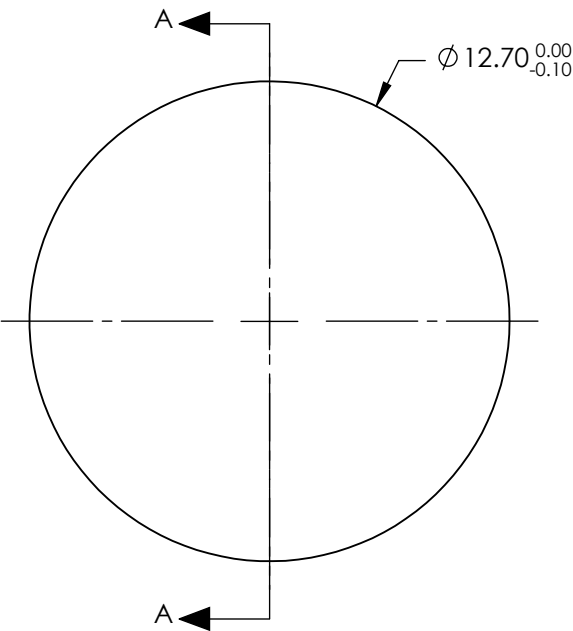


- NOTES:
- 1. SUBSTRATE: IR GRADE FUSED SILICA
  - 2. COATING:  
S1 & S2: R(ABS) < 0.1% @ 1900 - 2200nm
  - 3. CENTERING: < 3 ARCMIN
  - 4. RoHS: COMPLIANT

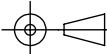
**FOR INFORMATION ONLY:  
DO NOT MANUFACTURE  
PARTS TO THIS DRAWING**



SECTION A-A

SPECIFICATIONS SUBJECT TO CHANGE WITHOUT NOTICE  
DIMENSIONS ARE FOR REFERENCE ONLY

	S1	S2
SHAPE	CONVEX	PLANO
SURFACE QUALITY	20-10	20-10
CLEAR APERTURE	Ø11.43	Ø11.43
BEVEL	PROTECTIVE AS NEEDED	PROTECTIVE AS NEEDED

EFL: 50.06mm		<div><div><div></div><div></div></div><div>Edmund Optics®</div></div>		
BFL: 49.03mm				
<div>THIRD ANGLE PROJECTION</div> <div></div>		TITLE	12.7mm Diameter x 50mm FL, 1900-2200nm Coated, IR Ultrafast Thin PCX Lens	
ALL DIMS IN	mm	DWG NO	11614	SHEET 1 OF 1