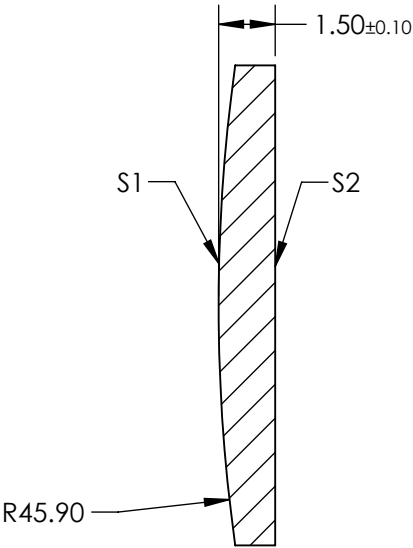
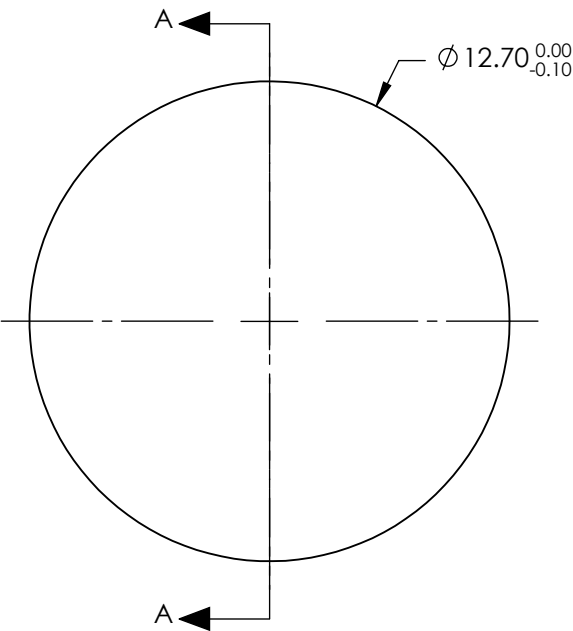


- NOTES:
- 1. SUBSTRATE: FUSED SILICA
  - 2. COATING:  
S1 & S2: NONE
  - 3. CENTERING: < 3 ARCMIN
  - 4. RoHS: COMPLIANT


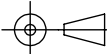
**FOR INFORMATION ONLY:  
DO NOT MANUFACTURE  
PARTS TO THIS DRAWING**



SECTION A-A

SPECIFICATIONS SUBJECT TO CHANGE WITHOUT NOTICE  
DIMENSIONS ARE FOR REFERENCE ONLY

	S1	S2
SHAPE	CONVEX	PLANO
SURFACE QUALITY	20-10	20-10
CLEAR APERTURE	Ø11.43	Ø11.43
BEVEL	PROTECTIVE AS NEEDED	PROTECTIVE AS NEEDED

EFL: 100.12 mm		<div><div> Edmund Optics®</div></div>		
BFL: 99.09 mm				
<div>THIRD ANGLE PROJECTION</div> 		TITLE	12.7mm Diameter x 100mm FL, Uncoated, Ultrafast Thin PCX Lens	
ALL DIMS IN	mm	DWG NO	11713	SHEET 1 OF 1