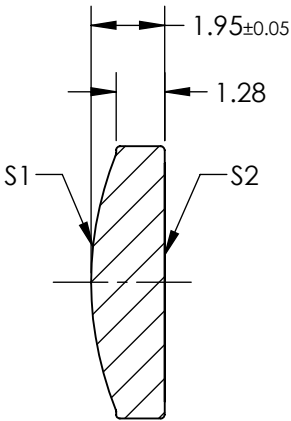
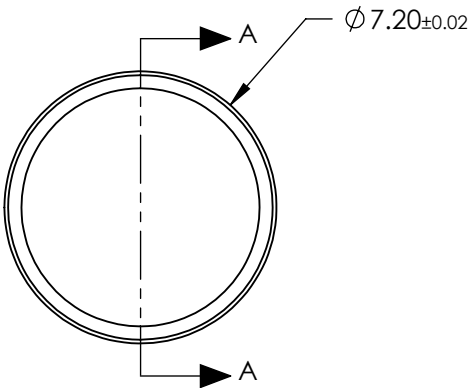


NOTES:

- 1. SUBSTRATE:  
D-ZLaF52LA
- 2. NUMERICAL APERTURE: 0.30
- 3. COATING  
S1 & S2: R(ABS) < 1.0% @ 1050 - 1600nm
- 4. FOCAL LENGTH TOLERANCE: ±1%
- 5. TRANSMITTED WAVEFRONT ERROR (λ, RMS): < 0.087


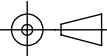


SECTION A-A

**FOR INFORMATION ONLY:  
DO NOT MANUFACTURE  
PARTS TO THIS DRAWING**

SPECIFICATIONS SUBJECT TO CHANGE WITHOUT NOTICE DIMENSIONS ARE FOR REFERENCE ONLY

	S1	S2
SHAPE	CONVEX	PLANO
SURFACE QUALITY	60-40	60-40
CLEAR APERTURE	Ø6.68	Ø6.68
BEVEL MAX	PROTECTIVE AS NEEDED	PROTECTIVE AS NEEDED

EFL	11.00	 <b>Edmund Optics®</b>		
BFL	10.01			
THIRD ANGLE PROJECTION		TITLE	0.30 NA 11.00mm FL 1050 - 1600 AR COATED, MOLDED ASPHERIC LENS	
ALL DIMS IN	mm	DWG NO	87123	SHEET 1 OF 1