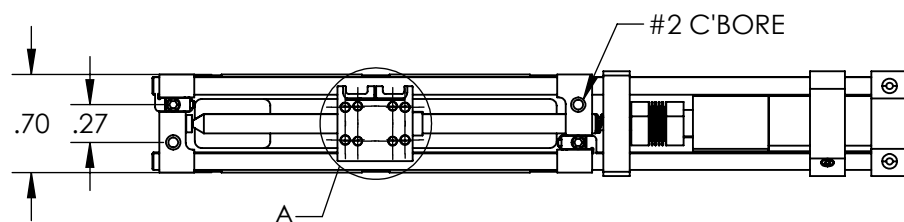
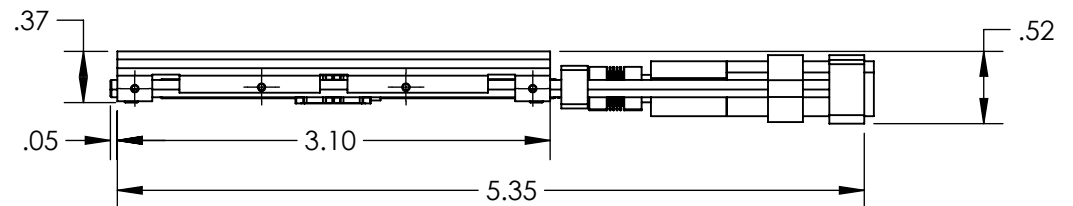
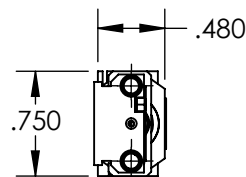
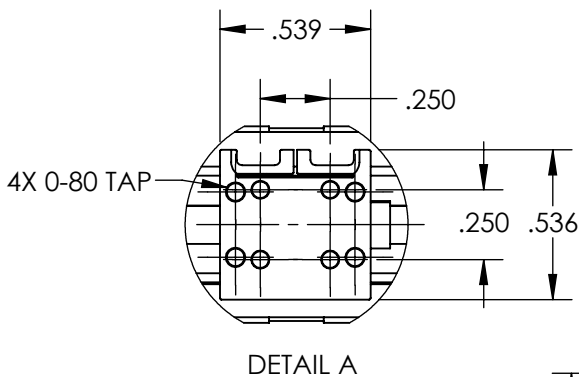
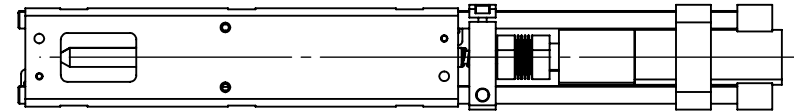


NOTES:

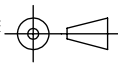
1. TYPE OF MOVEMENT: Single Axis
TRAVEL (in) : 2.00
ACCURACY (um): ± 3.5 per inch of travel
2. TYPE OF DRIVE: Precision Leadscrew
3. LOAD CAPACITY (kg): 0.5 Horizontal / 0.5 Vertical
4. RESOLUTION (um): 0.4961
5. MAXIMUM RUNOUT (um):
6. STRAIGHTNESS / FLATNESS (um): ± 2.5 per inch
7. PITCH: 80 TPI
8. REPEATABILITY (um): ± 2.5
9. BACKLASH (um): 50.00
10. GEAR DRIVE RATIO: 16:1
SPEED (mm/s): 6.00
COUNTS / SCREW REVOLUTION: 640.00
11. VACUUM COMPATIBILITY: 10-3 Torr



**FOR INFORMATION ONLY:
DO NOT MANUFACTURE
PARTS TO THIS DRAWING**

SPECIFICATIONS SUBJECT TO
CHANGE WITHOUT NOTICE
DIMENSIONS ARE FOR
REFERENCE ONLY

EO® Edmund Optics®

THIRD ANGLE PROJECTION 		TITLE	2" Travel, Micro Mini Stage, Extended Type	
ALL DIMS IN	mm	DWG NO	55328	SHEET 1 OF 1