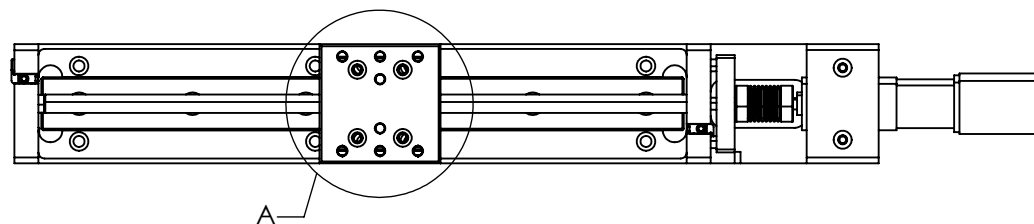
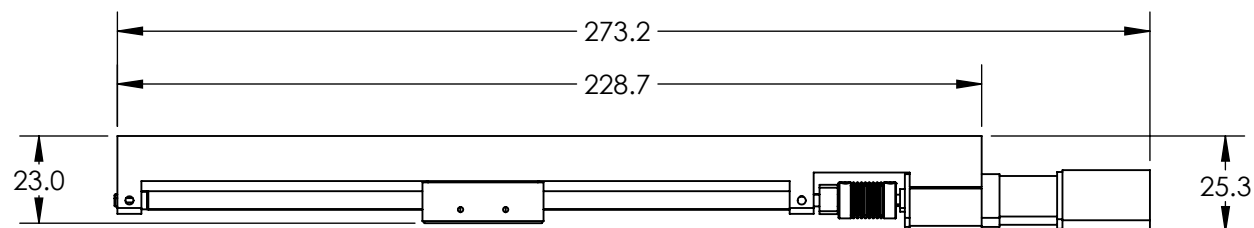
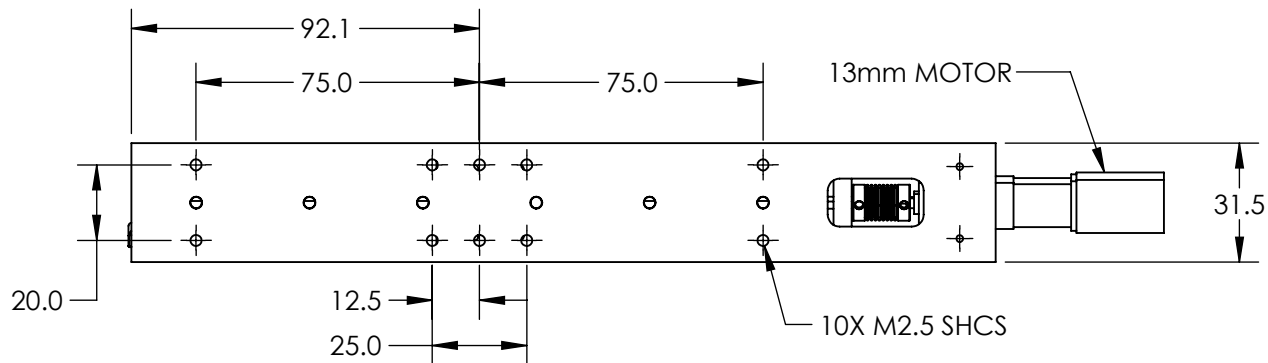
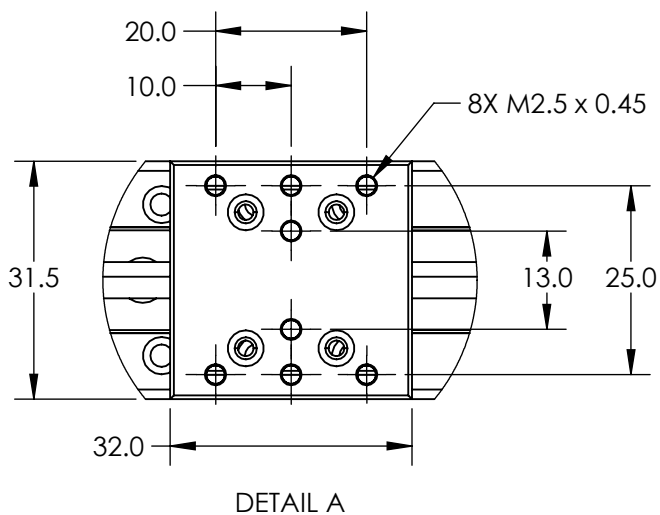


NOTES:

1. TYPE OF MOVEMENT: Single Axis
TRAVEL (mm) : 138
ACCURACY (um): ± 1.0 per 25mm of travel
2. TYPE OF DRIVE: Precision Leadscrew
3. RESOLUTION (um): 0.3595
4. MAXIMUM RUNOUT (mm): 0.003 per Inch
5. STRAIGHTNESS / FLATNESS (um): ± 2.0
6. PITCH: 80 TPI
7. REPEATABILITY (um): ± 0.5
8. BACKLASH (um): 1.00
9. GEAR DRIVE RATIO: 14:1
SPEED (mm/s): 7.00
10. VACUUM COMPATIBILITY: 10-3 Torr



**FOR INFORMATION ONLY:
DO NOT MANUFACTURE
PARTS TO THIS DRAWING**

SPECIFICATIONS SUBJECT TO
CHANGE WITHOUT NOTICE
DIMENSIONS ARE FOR
REFERENCE ONLY

EO® Edmund Optics®

THIRD ANGLE PROJECTION		TITLE	138mm Travel, Heavy Load Stage, Extended Type	
		DWG NO	55332	SHEET 1 OF 1