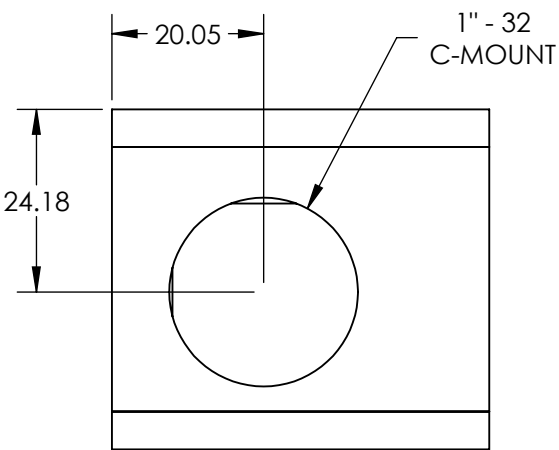
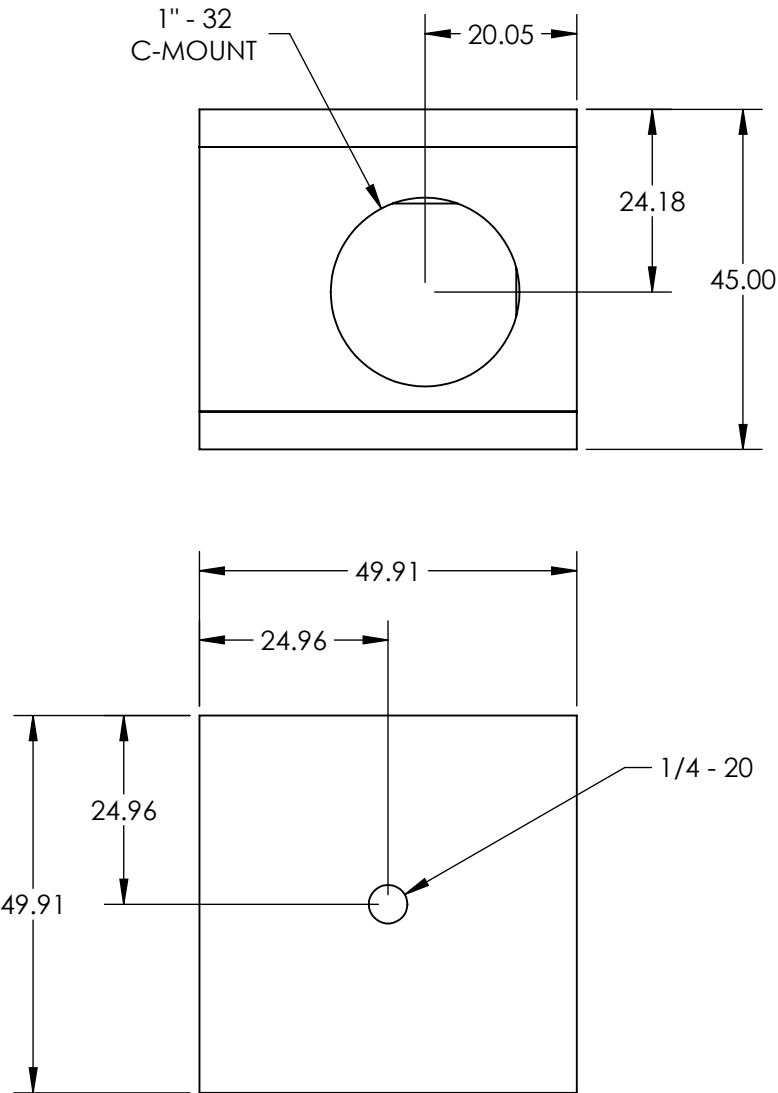


NOTES:

- 1. MATERIAL:  
SUBSTRATE: N-BK7  
HOUSING: BLACK ANODIZED ALUMINUM
- 2. ANGLE TOLERANCE:  $\pm 3$  ARCMIN
- 3. COATING (APPLIES ACROSS COATING APERTURE)  
ENTRANCE/EXIT FACES:  $R(\text{AVG}) \leq 1.75\% @ 400 - 700\text{nm}$   
REFLECTING SURFACES:  $R(\text{AVG}) > 85\% @ 400 - 700\text{nm}$   
WITH BLACK OVERPAINT
- 4. RoHS: COMPLIANT



**FOR INFORMATION ONLY:  
DO NOT MANUFACTURE  
PARTS TO THIS DRAWING**

SPECIFICATIONS SUBJECT TO CHANGE WITHOUT NOTICE  
DIMENSIONS ARE FOR REFERENCE ONLY

**EO**® Edmund Optics®

THIRD ANGLE PROJECTION		TITLE	PENTA PRISM IN C-MOUNT CUBE	
ALL DIMS IN	mm	DWG NO	53401	SHEET 1 OF 1