

NOTES:

1. SUBSTRATE: FUSED SILICA
2. SURFACE S2 TO BE PARALLEL TO SURFACE S1 TO WITHIN  
< 10 ARCSEC
3. COATING (APPLY ACROSS COATING APERTURE)  
S1:  $R_a = 90 \pm 3\%$  @ 715-980nm @  $45^\circ$   
 $R_p = 83 \pm 3\%$  @ 715-980nm @  $45^\circ$   
 $R_s = 97 \pm 3\%$  @ 715-980nm @  $45^\circ$

GDD (T):  $\pm 65 \text{ fs}^2$  @  $45^\circ$   
GDD (R):  $\pm 75 \text{ fs}^2$  @  $45^\circ$

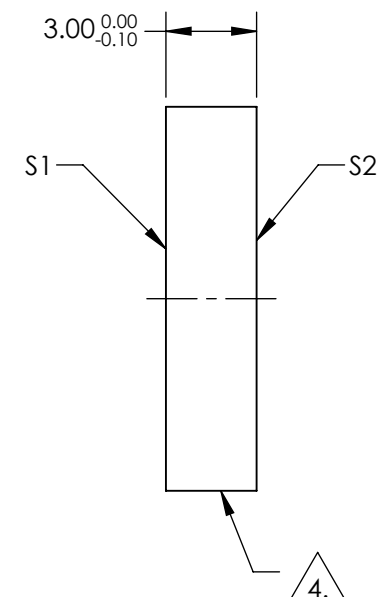
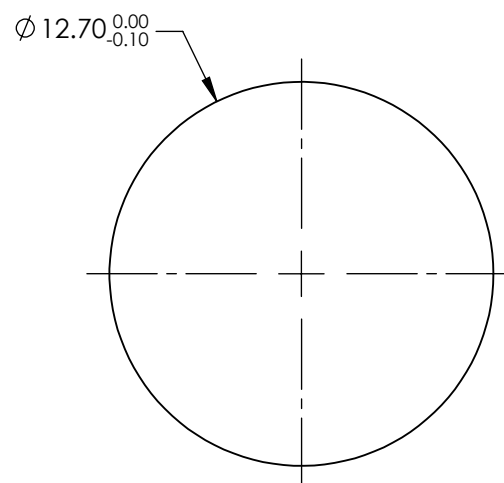
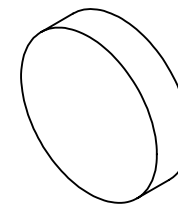
S2:  $AR_s < 2\%$  @ 650-1100nm @  $45^\circ$   
 $AR_p < 1.5\%$  @ 650-1100nm @  $45^\circ$

GDD (T):  $\pm 65 \text{ fs}^2$  @  $45^\circ$   
GDD (R):  $\pm 75 \text{ fs}^2$  @  $45^\circ$

 FINE GRIND SURFACE

5. TRANSMITTED WAVEFRONT DISTORTION @ 632.8nm:  $\lambda/8$
6. RoHS: COMPLIANT

**FOR INFORMATION ONLY:  
DO NOT MANUFACTURE  
PARTS TO THIS DRAWING**



SPECIFICATIONS SUBJECT TO CHANGE WITHOUT NOTICE  
DIMENSIONS ARE FOR REFERENCE ONLY

	S1	S2
SHAPE	PLANO	PLANO
SURFACE FLATNESS @ 632.8nm	$\lambda/3$	N/A
SURFACE QUALITY	10 - 5	10 - 5
CLEAR APERTURE	$\varnothing 10.16$	$\varnothing 10.16$
BEVEL	PROTECTIVE AS NEEDED	PROTECTIVE AS NEEDED



ALL DIMS IN

mm



**Edmund Optics®**

TITLE

12.7mm NON-POLARIZING BEAM SPLITTER R/T  
90:10

DWG NO

13829

SHEET  
1 OF 1