

NOTES:

1. SUBSTRATE: FUSED SILICA
2. SURFACE S2 TO BE PARALLEL TO SURFACE S1 TO WITHIN
< 10 ARCSEC
3. COATING (APPLY ACROSS COATING APERTURE)
S1: $R_a = 50 \pm 3\%$ @ 650-1050nm @ 45°
 $R_p = 35 \pm 3\%$ @ 650-1050nm @ 45°
 $R_s = 67 \pm 3\%$ @ 650-1050nm @ 45°

GDD (T): $\pm 15 \text{ fs}^2$ @ 45°
GDD (R): $\pm 15 \text{ fs}^2$ @ 45°

S2: $AR_s < 2\%$ @ 650-1100nm @ 45°
 $AR_p < 1.5\%$ @ 650-1100nm @ 45°

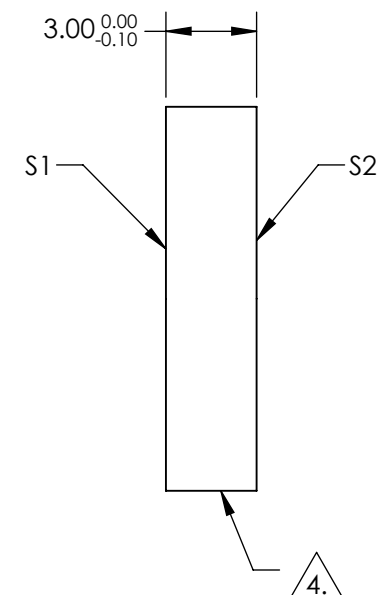
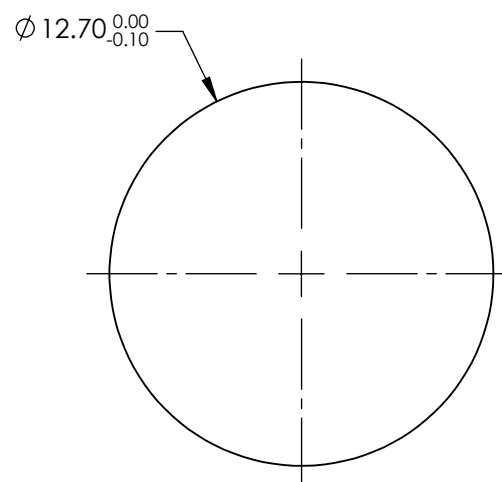
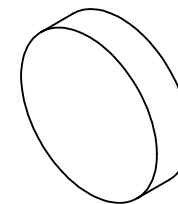
GDD (T): $\pm 15 \text{ fs}^2$ @ 45°
GDD (R): $\pm 15 \text{ fs}^2$ @ 45°

 FINE GRIND SURFACE

5. TRANSMITTED WAVEFRONT DISTORTION @ 632.8nm:
 $\lambda/8$ @ 633nm @ 45° AOI

6. RoHS: COMPLIANT

**FOR INFORMATION ONLY:
DO NOT MANUFACTURE
PARTS TO THIS DRAWING**



SPECIFICATIONS SUBJECT TO CHANGE WITHOUT NOTICE
DIMENSIONS ARE FOR REFERENCE ONLY

	S1	S2
SHAPE	PLANO	PLANO
SURFACE FLATNESS @ 632.8nm	$\lambda/6$	N/A
SURFACE QUALITY	10 - 5	10 - 5
CLEAR APERTURE	Ø10.16	Ø10.16
BEVEL	PROTECTIVE AS NEEDED	PROTECTIVE AS NEEDED



ALL DIMS IN mm

 **Edmund Optics®**

TITLE 12.7mm NON-POLARIZING BEAM SPLITTER R/T 50:50

DWG NO 13833

SHEET 1 OF 1