

NOTES:

1. SUBSTRATE: FUSED SILICA
2. SURFACE S2 TO BE PARALLEL TO SURFACE S1 TO WITHIN <5 ARCMIN
3. COATING (APPLY ACROSS COATING APERTURE)  
S1: R(AVG) > 99.7% 730 - 870nm @ 45° AOI  
Rs >99.7 @ 685 - 935nm @ 45° AOI

GDD:

S-POLARIZATION:  $0 \pm 20\text{fs}^2$  @ 700 - 900nm

P-POLARIZATION:  $0 \pm 20\text{fs}^2$  @ 740 - 860nm

TOD:

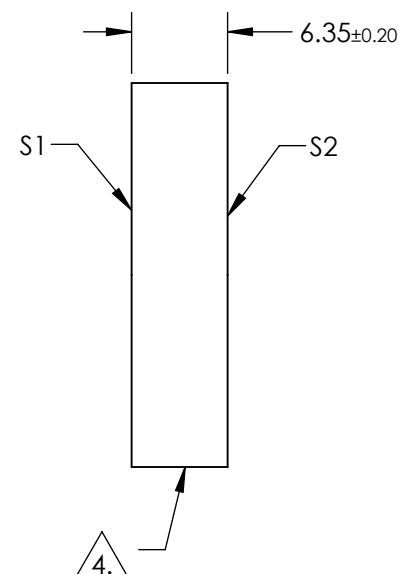
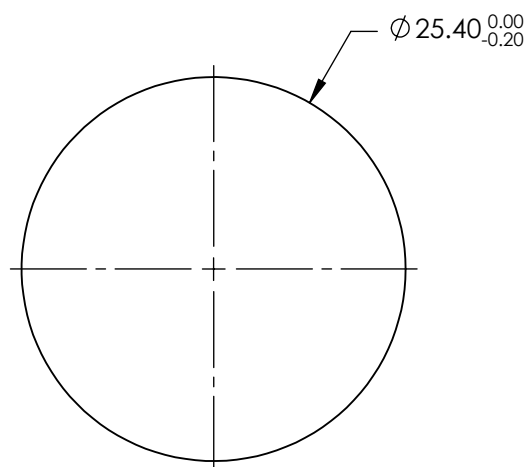
S-POLARIZATION:  $10\text{fs}^2$  @ 800nm

P-POLARIZATION:  $40\text{fs}^2$  @ 800nm

S2: NONE

4. FINE GRIND SURFACE

5. RoHS: COMPLIANT



**FOR INFORMATION ONLY:  
DO NOT MANUFACTURE  
PARTS TO THIS DRAWING**

SPECIFICATIONS SUBJECT TO CHANGE WITHOUT NOTICE  
DIMENSIONS ARE FOR REFERENCE ONLY

	S1	S2
SHAPE	PLANO	PLANO
SURFACE QUALITY	10-5	COMMERCIAL POLISH
SURFACE FLATNESS	$\lambda/10$	N/A
CLEAR APERTURE	$\varnothing 21.84$	N/A
BEVEL	PROTECTIVE AS NEEDED	PROTECTIVE AS NEEDED



ALL DIMS IN mm

**Edmund Optics®**

TITLE

700 - 900nm, 25.4mm DIA., ULTRAFAST  
BROADBAND LASER MIRROR

DWG NO

62766

SHEET  
1 OF 1