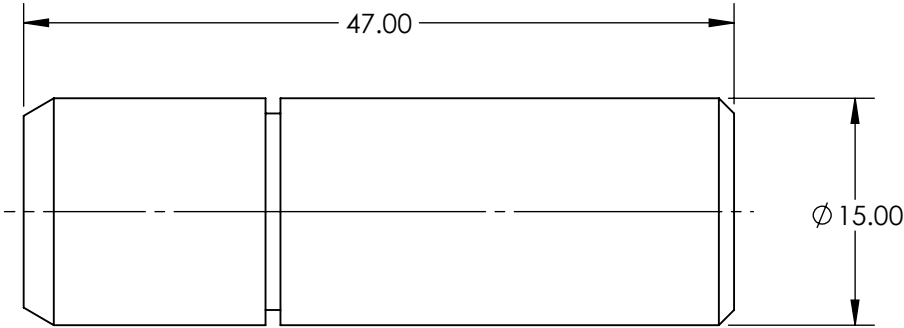


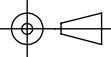
NOTES:  
1. RoHS: COMPLIANT



**FOR INFORMATION ONLY:  
DO NOT MANUFACTURE  
PARTS TO THIS DRAWING**

SPECIFICATIONS SUBJECT TO CHANGE WITHOUT NOTICE  
DIMENSIONS ARE FOR REFERENCE ONLY

DESIGN WAVELENGTH (nm)	635
OUTPUT POWER (mW)	0.9
BEAM DAIAMTER (mm)	2
FOCUS RANGE	20mm - ∞
COLOR	RED
LASER CLASS - CDRH	II
MEAN TIME TO FAILURE @ 25° (HOURS)	>30,000
POINTING ACCURACY (mrad)	≤5
POWER REQUIREMENT	5V DC ±5%
TYPE	DIODE
WAVELENGTH STABILITY (nm/°C)	0.25

<div><div>THIRD ANGLE PROJECTION</div></div> <div><div>Edmund Optics®</div><div>0.9mW 635nm Circular, Premier Laser Diode</div></div>			
ALL DIMS IN	mm	DWG NO	57105
			SHEET 1 OF 1