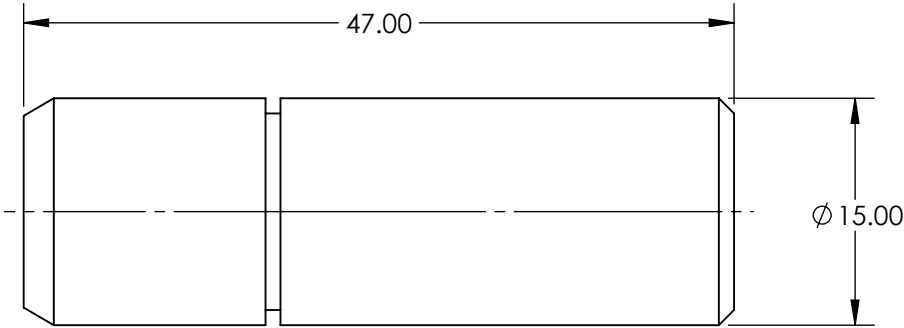


NOTES:
1. RoHS: COMPLIANT

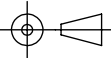


**FOR INFORMATION ONLY:
DO NOT MANUFACTURE
PARTS TO THIS DRAWING**

SPECIFICATIONS SUBJECT TO CHANGE WITHOUT NOTICE
DIMENSIONS ARE FOR REFERENCE ONLY

DESIGN WAVELENGTH (nm)	655
OUTPUT POWER (mW)	0.9
BEAM DAIAMTER (mm)	2
FOCUS RANGE	20mm - ∞
COLOR	RED
LASER CLASS - CDRH	II
MEAN TIME TO FAILURE @ 25° (HOURS)	>115,000
POINTING ACCURACY (mrad)	≤5
POWER REQUIREMENT	5V DC ±5%
TYPE	DIODE
WAVELENGTH STABILITY (nm/°C)	0.25

EO[®] Edmund Optics[®]

THIRD ANGLE PROJECTION 		TITLE	0.9mW 655nm Circular, Premier Laser Diode	
ALL DIMS IN	mm	DWG NO	57107	SHEET 1 OF 1