

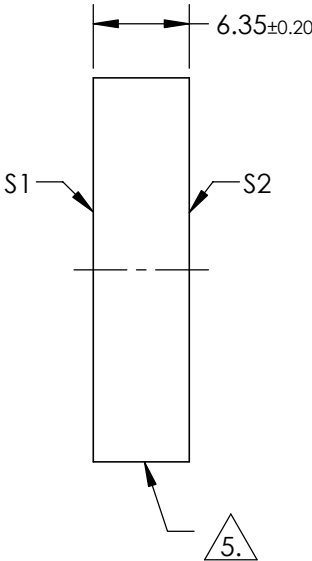
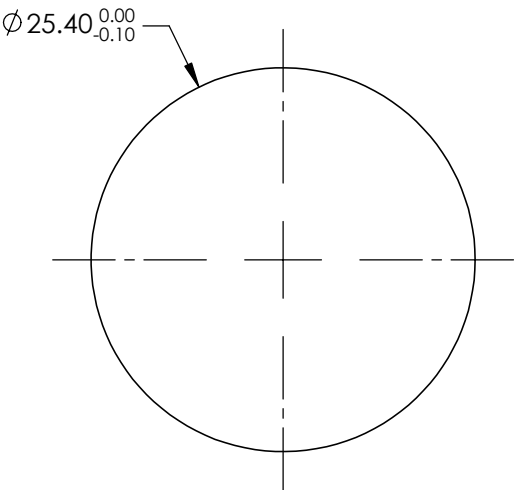
NOTES:

- 1. SUBSTRATE: FUSED SILICA
- 2. RoHS: COMPLIANT
- 3. SURFACE S2 TO BE PARALLEL TO SURFACE S1 TO WITHIN <3 ARCMIN
- 4. COATING (APPLY ACROSS COATING APERTURE)
S1: Rs(ABS) > 99.95% @ 355nm @ 45° AOI


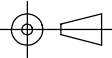
DAMAGE THRESHOLD,
PULSED: 7.5 J/cm² @ 355nm, 20ns, 20Hz

5. FINE GRIND SURFACE

FOR INFORMATION ONLY:
DO NOT MANUFACTURE
PARTS TO THIS DRAWING



SPECIFICATIONS SUBJECT TO CHANGE WITHOUT NOTICE
DIMENSIONS ARE FOR REFERENCE ONLY

			 Edmund Optics®			
SHAPE	S1 PLANO	S2 PLANO		TITLE	355nm, 45°, 25.4mm DIA., 6.35mm THICK, Nd:YAG IBS LASER LINE MIRROR	
SURFACE QUALITY	10-5	COMMERCIAL POLISH				
CLEAR APERTURE	Ø21.59	N/A				
BEVEL	PROTECTIVE AS NEEDED	PROTECTIVE AS NEEDED		DWG NO	34838	SHEET 1 OF 1
			ALL DIMS IN	mm		