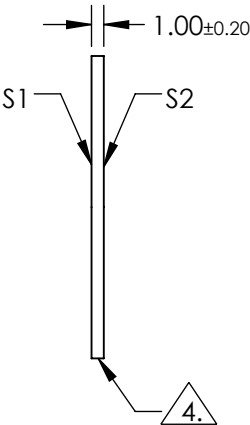
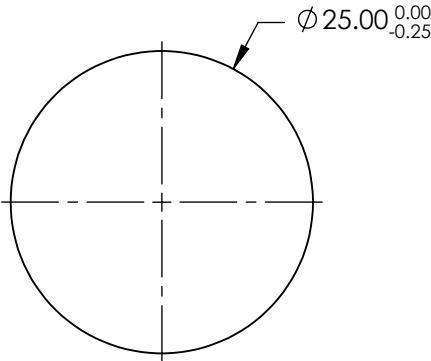
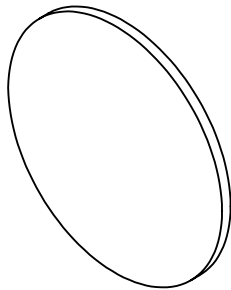


NOTES:

- 1. SUBSTRATE: N-BK7
- 2. S2 TO BE PARALLEL WITH S1 TO < 1 ARCMIN
- 3. COATING (APPLY ACROSS CLEAR APERTURE)  
S1 & S2: R(AVG) <0.5% @ 350 - 700nm

4. FINE GRIND SURFACE


- 5. RoHS COMPLIANT
- 6. SURFACE FLATNESS (P-V):  $\lambda/4$  (per inch over clear aperture)



**FOR INFORMATION ONLY:  
DO NOT MANUFACTURE  
PARTS TO THIS DRAWING**

SPECIFICATIONS SUBJECT TO CHANGE WITHOUT NOTICE  
DIMENSIONS ARE FOR REFERENCE ONLY

	S1	S2
SHAPE	PLANO	PLANO
SURFACE QUALITY	60-40	60-40
CLEAR APERTURE	Ø22.50	Ø22.50
BEVEL	PROTECTIVE AS NEEDED	PROTECTIVE AS NEEDED

 **Edmund Optics®**

THIRD ANGLE PROJECTION	TITLE	25mm DIA., 1mm THICK, VIS-EXT COATED, $\lambda/4$ N-BK7 WINDOW
ALL DIMS IN	DWG NO	13294
mm		SHEET 1 OF 1