

NOTES:

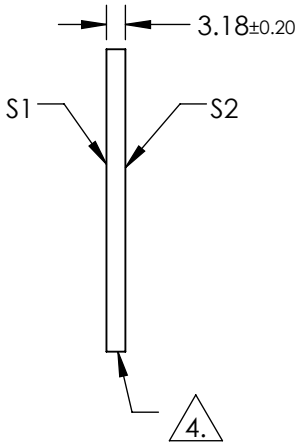
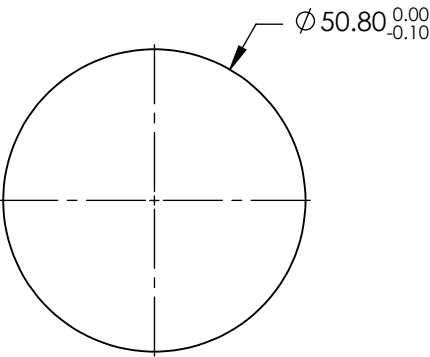
1. SUBSTRATE:
SAPPHIRE (Al₂O₃)
2. SURFACE S2 TO BE PARALLEL WITH SURFACE S1 TO WITHIN < 3
3. COATING (APPLY ACROSS CLEAR APERTURE)

S1 & S2: R(AVG) <0.3% @ 1000 - 1100nm
R(AVG) <0.1% @ 1020 - 1070nm



FINE GRIND SURFACE

5. TRANSMITTED WAVEFRONT DISTORTION:
≤λ/10 OVER 25.4mm OF CLEAR APERTURE
6. ROHS COMPLIANT



SPECIFICATIONS SUBJECT TO CHANGE WITHOUT NOTICE
DIMENSIONS ARE FOR REFERENCE ONLY

	S1	S2
SHAPE	PLANO	PLANO
CLEAR APERTURE	Ø45.00	Ø45.00
SURFACE QUALITY	10-5	10-5
BIREFRINGENCE (n _o -n _e)	0.000	0.000
AXIS ORIENTATION	C-AXIS	C-AXIS
BEVEL	PROTECTIVE AS NEEDED	PROTECTIVE AS NEEDED



ALL DIMS IN mm



Edmund Optics®

TITLE

50.8mm DIA., 3.18mm THICK, BBAR (1000-1100nm), LASER GRADE C-AXIS SAPPHIRE WINDOW

DWG NO

15808

SHEET
1 OF 1