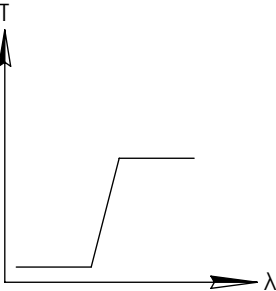
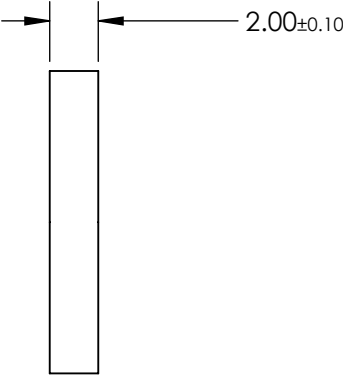
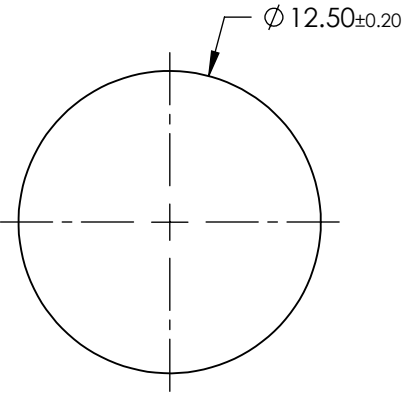
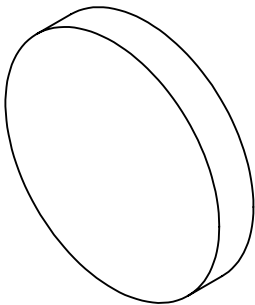


NOTES:

- 1. SUBSTRATE: SCHOTT GG395
- 2. SURFACE S2 TO BE PARALLEL TO SURFACE S1 TO WITHIN 3 ARCMIN

FOR INFORMATION ONLY:
DO NOT MANUFACTURE
PARTS TO THIS DRAWING



LONGPASS FILTER

SPECIFICATIONS SUBJECT TO CHANGE WITHOUT NOTICE
DIMENSIONS ARE FOR REFERENCE ONLY

REV. A	VALUE
SHAPE	PLANO
SPECTRAL TRANSMITTANCE $\tau_{ip}(\%)$	92
PASSBAND LIMIT $\lambda_{p1} \text{ (nm)}$	480
CUT-OFF POSITION $\lambda_c \text{ (nm)}$	395±6
STOPBAND LIMIT $\lambda_s \text{ (nm)}$	340
WAVELENGTH	UV
BEVEL	PROTECTIVE AS NEEDED



ALL DIMS IN

mm

TITLE

SCHOTT GG395, 12.5mm DIA., 2mm THICK,
COLORED GLASS LONGPASS FILTER

DWG NO

16434

SHEET
1 OF 1