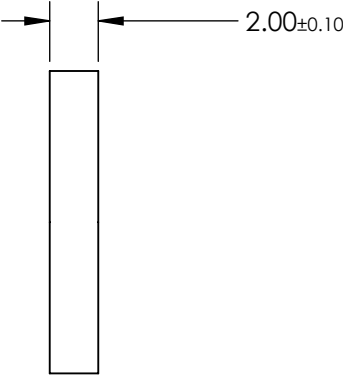
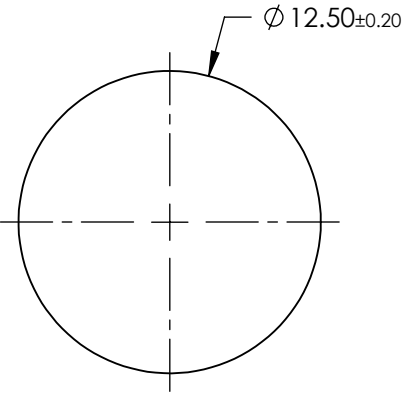
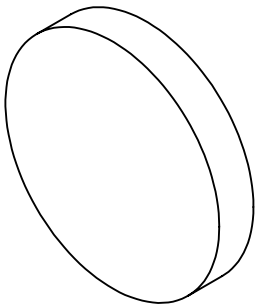


NOTES:

- 1. SUBSTRATE: SCHOTT OG515
- 2. SURFACE S2 TO BE PARALLEL TO SURFACE S1 TO WITHIN 3 ARCMIN

FOR INFORMATION ONLY:  
DO NOT MANUFACTURE  
PARTS TO THIS DRAWING



LONGPASS FILTER

SPECIFICATIONS SUBJECT TO CHANGE WITHOUT NOTICE  
DIMENSIONS ARE FOR REFERENCE ONLY

REV. A	VALUE
SHAPE	PLANO
SPECTRAL TRANSMITTANCE $\tau_{ip}(\%)$	93
PASSBAND LIMIT $\lambda_{p1} \text{ (nm)}$	580
CUT-OFF POSITION $\lambda_c \text{ (nm)}$	515±6
STOPBAND LIMIT $\lambda_s \text{ (nm)}$	440
WAVELENGTH	VIS
BEVEL	PROTECTIVE AS NEEDED



ALL DIMS IN

mm

TITLE

SCHOTT OG515, 12.5mm DIA., 2mm THICK,  
COLORED GLASS LONGPASS FILTER

DWG NO

16441

SHEET  
1 OF 1