

NOTES:

1. SUBSTRATE: FUSED SILICA
2. SURFACE S2 TO BE PARALLEL TO SURFACE S1 TO WITHIN < 10 ARCSEC
3. COATING (APPLY ACROSS COATING APERTURE)
 S1: $R_{avg} = 50\%$ @ 550 - 1050nm
 $R_p = 35 \pm 3\%$ @ 550 - 1050nm
 $R_s = 67 \pm 3\%$ @ 550 - 1050nm

GDD (T): 0 fs^2 @ 550 - 1050nm
 GDD (R): 0 fs^2 @ 550 - 1050nm

S2: $R_s < 2\%$ @ 550 - 1050nm
 $R_p < 1.5\%$ @ 550 - 1050nm

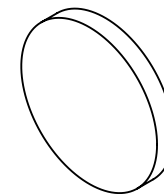
GDD (T): 0 fs^2 @ 550 - 1050nm
 GDD (R): 0 fs^2 @ 550 - 1050nm

4. FINE GRIND SURFACE

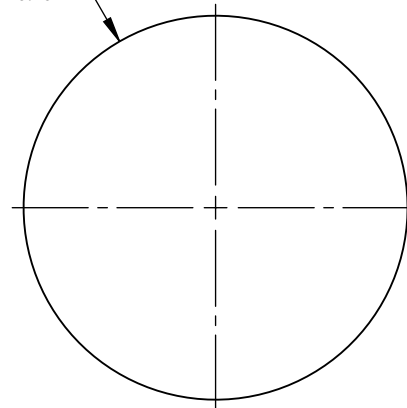
5. TRANSMITTED WAVEFRONT DISTORTION @ 632.8nm:
 $\lambda/10$ @ 632.8 nm

6. RoHS: COMPLIANT

**FOR INFORMATION ONLY:
 DO NOT MANUFACTURE
 PARTS TO THIS DRAWING**



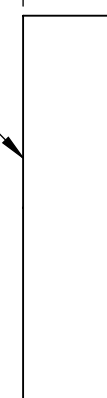
$\varnothing 25.40^{+0.00}_{-0.10}$



6.35 ± 0.20

S1

S2

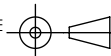


4.

SPECIFICATIONS SUBJECT TO CHANGE WITHOUT NOTICE
 DIMENSIONS ARE FOR REFERENCE ONLY

	S1	S2
SHAPE	PLANO	PLANO
SURFACE FLATNESS @ 632.8nm		N/A
SURFACE QUALITY	10-5 (substrate)	20-10
CLEAR APERTURE	$\varnothing 20.32$	$\varnothing 20.32$
BEVEL	PROTECTIVE AS NEEDED	PROTECTIVE AS NEEDED

THIRD ANGLE PROJECTION



ALL DIMS IN

mm



Edmund Optics®

TITLE

25.4mm Dia., 550 - 1050nm, 50R:50T, Ultrafast Beamsplitter

DWG NO

17068

SHEET
1 OF 1