

NOTES:

1. MATERIALS: BLACK ANODIZED ALUMINUM, STAINLESS STEEL

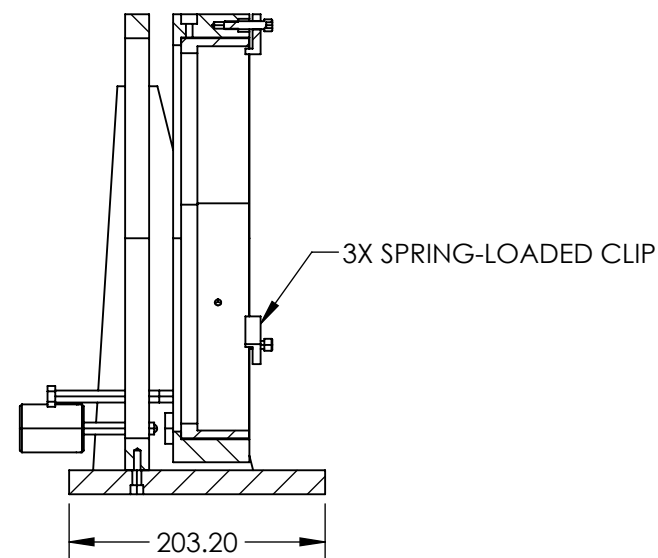
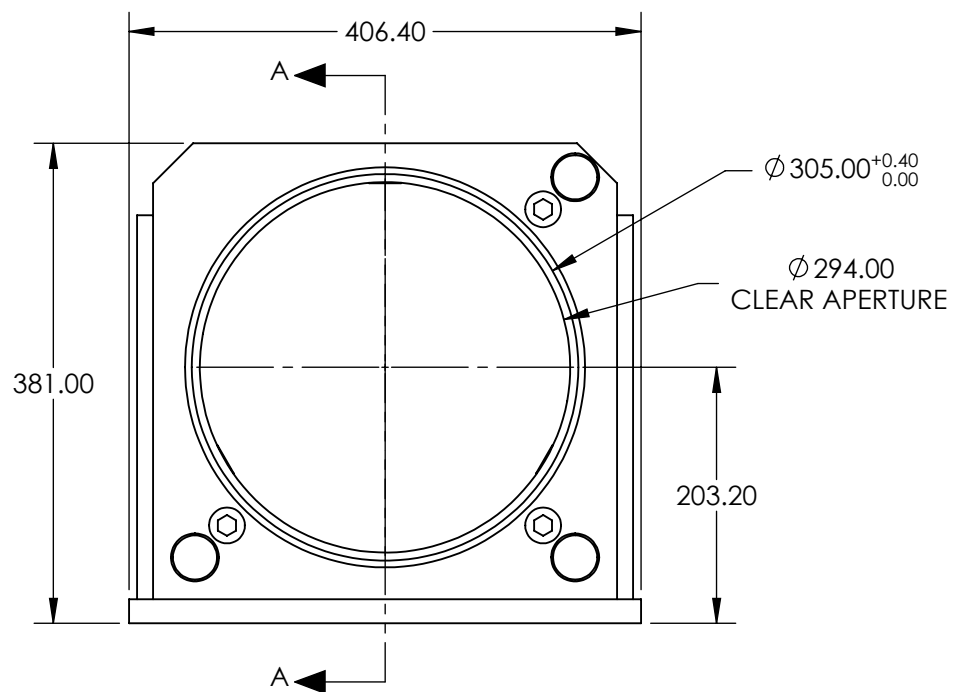
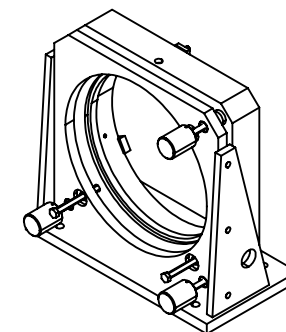
2. DIMENSIONS OF COMPATIBLE OPTICS:

DIAMETER: 12 in

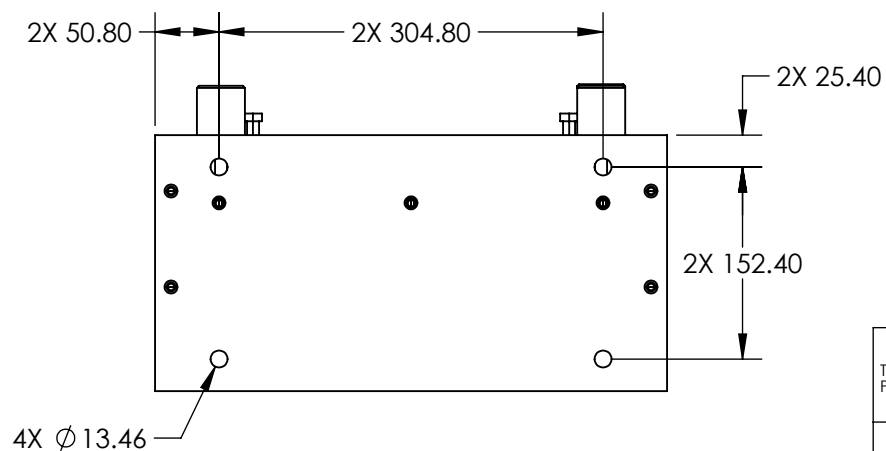
THICKNESS: <1.62 in

3. RoHS: COMPLIANT

4. PARTS ARE SOLD DISASSEMBLED



SECTION A-A



**FOR INFORMATION ONLY:
DO NOT MANUFACTURE
PARTS TO THIS DRAWING**

SPECIFICATIONS SUBJECT TO CHANGE WITHOUT NOTICE
DIMENSIONS ARE FOR REFERENCE ONLY

Edmund Optics®

THIRD ANGLE PROJECTION		TITLE	304.8mm/12.0" Optic Dia., Optical Cell Kinematic Mount
ALL DIMS IN	in	DWG NO	12227

SHEET
1 OF 1