

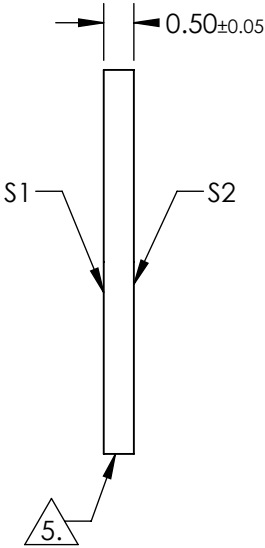
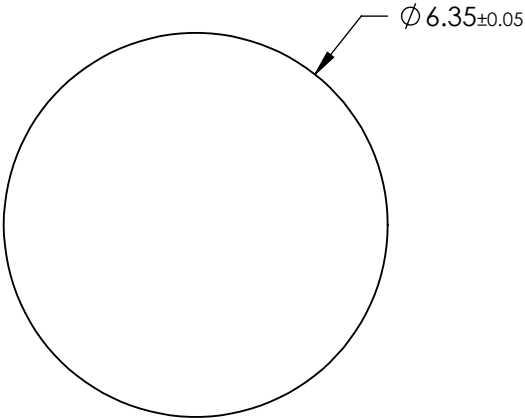
NOTES:

- 1. SUBSTRATE: SAPPHIRE (AL2O3)
- 2. SURFACE S1 TO BE PARALLEL WITH SURFACE S2 TO WITHIN ≤ 3.5 ARCMIN
- 3. ENVIRONMENTAL REQUIREMENTS:
 - S1 & S2: HIGH DURABILITY BBAR (2000-5000nm)
 - ADHESION: PER MIL-M-13508C PARA 4.4.6
 - ABRASION: SEVERE PER MIL-C-675C PARA 4.5.10
 - HUMIDITY: PER MIL-C-675C PARA 4.5.8
 - SALT SOLUBILITY: PER MIL-C-675C PARA 4.5.7
 - SALT SPRAY: PER MIL-C-675C PARA 4.5.9
 - TEMPERATURE CYCLE: PER MIL-M-13508C PARA 4.4.4
- 4. REFLECTION PERFORMANCE ACROSS CLEAR APERTURE ON CENTER

S1 & S2:
R(AVG) <1.5% @ 2000 - 5000nm
R(ABS) <2.0% @ 2000 - 5000nm


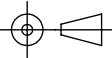
5. FINE GRIND SURFACE

6. ROHS COMPLIANT



**FOR INFORMATION ONLY:
DO NOT MANUFACTURE
PARTS TO THIS DRAWING**

SPECIFICATIONS SUBJECT TO CHANGE WITHOUT NOTICE
DIMENSIONS ARE FOR REFERENCE ONLY

	S1	S2	 Edmund Optics®			
SHAPE	PLANO	PLANO		TITLE	50.8mm Dia., 3.18mm Thick, 2000-5000nm, High Durability AR Coated Sapphire Window	
SURFACE QUALITY	80-50	80-50		DWG NO	18468	SHEET 1 OF 1
CLEAR APERTURE	Ø 45.72	Ø 45.72				
SURFACE FLATNESS	2λ (typical)	2λ (typical)				
BEVEL	PROTECTED AS NEEDED	PROTECTED AS NEEDED	ALL DIMS IN mm			