

NOTES:

- 1. SUBSTRATE: UV Grade MgF2
- 2. SURFACE S2 TO BE PARALLEL WITH SURFACE S1 TO WITHIN 1 ARCMIN
- 3. COATING (APPLY ACROSS CLEAR APERTURE)

OPTICAL DENSITY = 2.0 ± 0.15 FROM 120 - 200nm

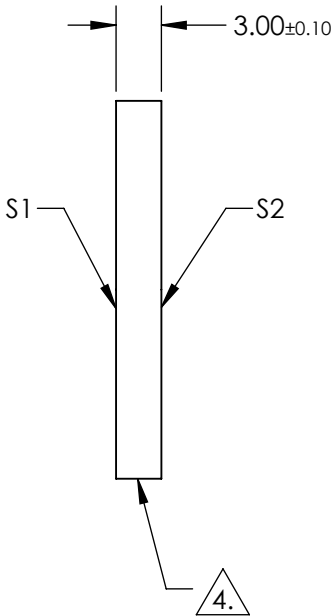
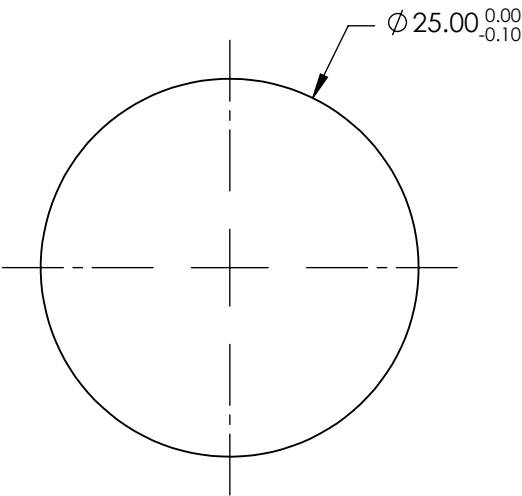
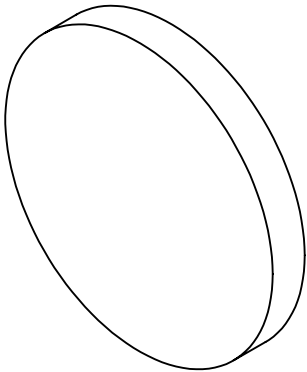
S1: COATED
S2: UNCOATED

**FOR INFORMATION ONLY:
DO NOT MANUFACTURE
PARTS TO THIS DRAWING**

4. FINE GRIND SURFACE (ADD INK NOTE AS NEEDED)

5. POWER, IRREGULARITY, AND SURFACE QUALITY SPECIFICATIONS
APPLY ACROSS CLEAR APERTURE

6. TRANSMITTED WAVEFRONT DISTORTION P-V @ 632.8nm: $\lambda/4$



SPECIFICATIONS SUBJECT TO CHANGE WITHOUT NOTICE
DIMENSIONS ARE FOR REFERENCE ONLY

	S1	S2
SHAPE	PLANO	PLANO
SURFACE QUALITY	40-20	40-20
CLEAR APERTURE	$\phi 20$	$\phi 20$
COATING APERTURE	$\phi 20$	$\phi 20$
BEVEL	PROTECTED AS NEEDED	PROTECTED AS NEEDED

		TITLE	
THIRD ANGLE PROJECTION		2.0 OD 25mm Diameter VUV ND Filter	
ALL DIMS IN	mm	DWG NO	20138
		SHEET 1 OF 1	