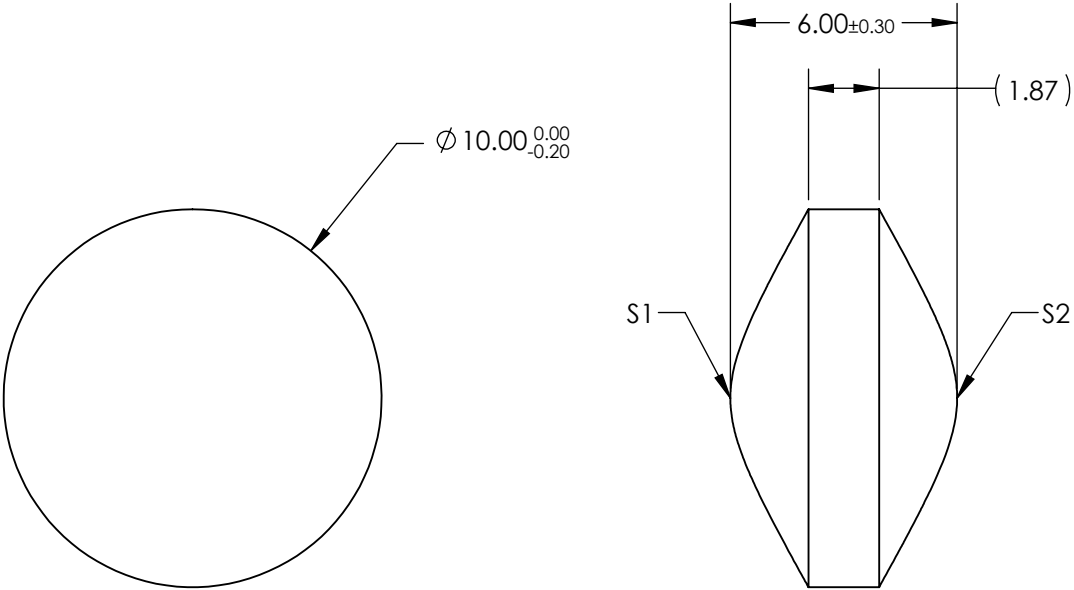

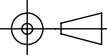


- NOTES:
- 1. SUBSTRATE:
H-K51
 - 2. COATING (APPLY ACROSS CLEAR APERTURE)
S1: NONE
S2: NONE
 - 3. CENTERING: ≤ 30 ARCMIN



**FOR INFORMATION ONLY:
DO NOT MANUFACTURE
PARTS TO THIS DRAWING**

SPECIFICATIONS SUBJECT TO CHANGE WITHOUT NOTICE
DIMENSIONS ARE FOR REFERENCE ONLY

	S1	S2	EFL @ 587.6nm	4.50	 Edmund Optics®		
SHAPE	CONVEX	CONVEX	BFL @ 587.6nm	1.65			
SURFACE QUALITY	80-50 (typical)	80-50 (typical)	THIRD ANGLE PROJECTION 	TITLE	10mm Dia. x 4.5mm FL, Aspheric Condenser Lens		
CLEAR APERTURE	ϕ 9.00	ϕ 9.00					
BEVEL	PROTECTED AS NEEDED	PROTECTED AS NEEDED	ALL DIMS IN	mm	DWG NO	22840	SHEET 1 OF 1