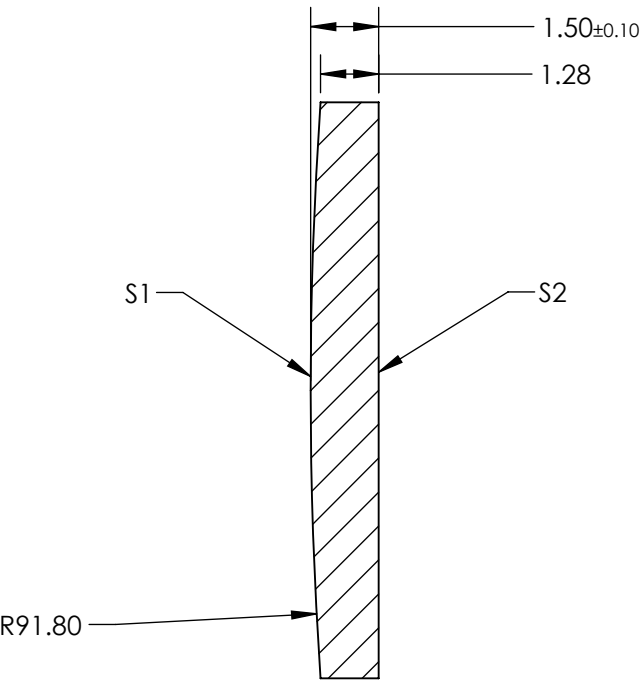
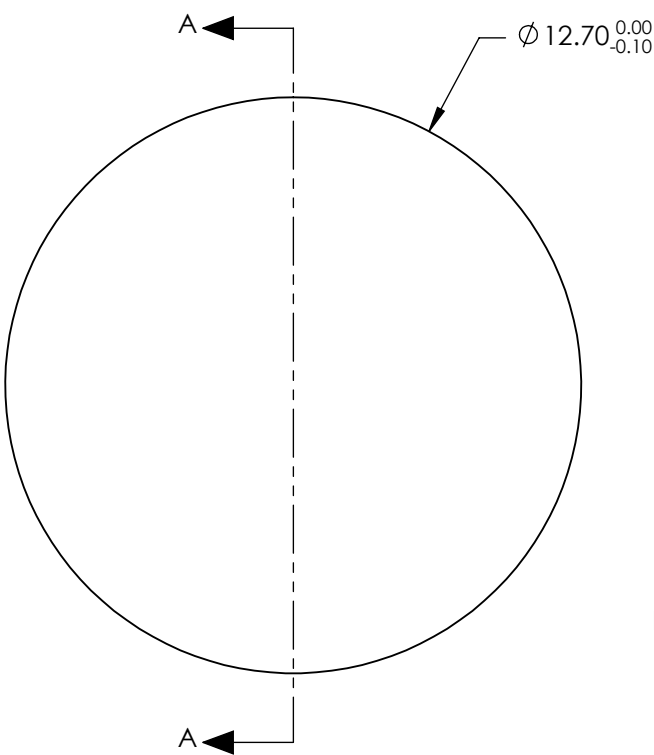
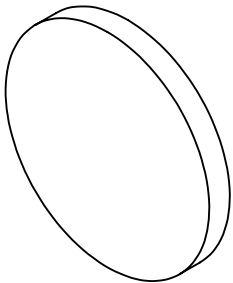


NOTES:

- 1. SUBSTRATE: IR GRADE FUSED SILICA
- 2. COATING:
 $S1 \text{ \& } S2: R(AVG) \leq 0.5\% \text{ FROM } 350\text{-}700\text{nm @ } 0^\circ \text{ AOI}$
- 3. CENTERING: < 3 ARCMIN
- 4. RoHS: COMPLIANT



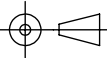
SECTION A-A

**FOR INFORMATION ONLY:
DO NOT MANUFACTURE
PARTS TO THIS DRAWING**

SPECIFICATIONS SUBJECT TO CHANGE WITHOUT NOTICE
DIMENSIONS ARE FOR REFERENCE ONLY

	S1	S2
SHAPE	CONVEX	PLANO
SURFACE QUALITY	20-10	20-10
CLEAR APERTURE	Ø11.43	Ø11.43
BEVEL	PROTECTED AS NEEDED	PROTECTED AS NEEDED

THIRD ANGLE
PROJECTION



ALL DIMS IN

mm



Edmund Optics®

TITLE

12.7mm Diameter x 200mm FL, 350-700nm,
Ultrafast Thin PCX Lens

DWG NO

22638

SHEET
6 OF 19