

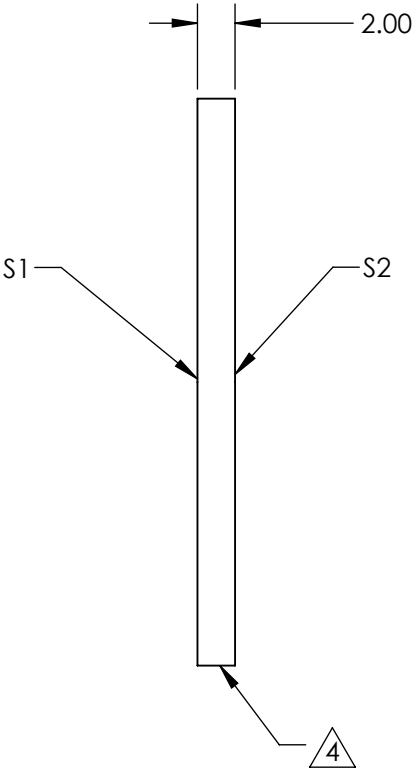
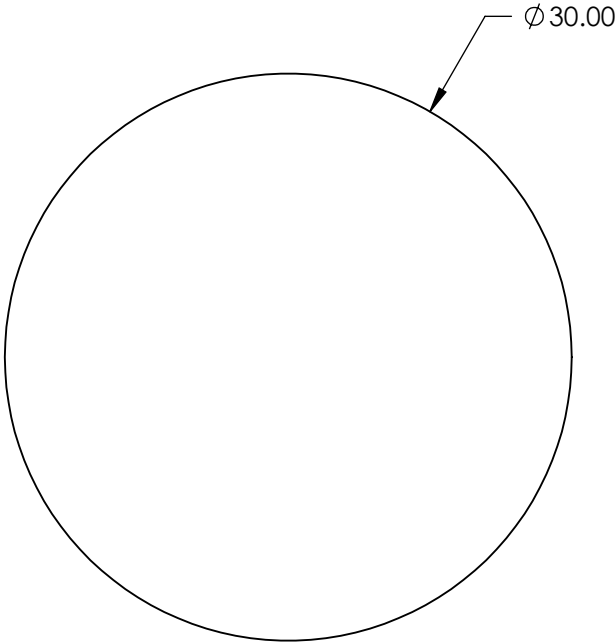
NOTES:

- 1. SUBSTRATE: N-BK7
- 2. S2 TO BE PARALLEL WITH S1 TO <1 ARCMIN
- 3. COATING (APPLY ACROSS CLEAR APERTURE)

S1: VIS-NIR (400-1000nm)
S2: VIS-NIR (400-1000nm)
Rabs ≤0.25% @ 880nm Ravg ≤1.25% @ 400 - 870 nm Ravg ≤1.25% @ 890 - 1000nm

4. FINE GRIND SURFACE

- 5. ROHS COMPLIANT
- 6. TRANSMITTED WAVEFRONT (P-V):
λ/4 (per inch over clear aperture)



**FOR INFORMATION ONLY:
DO NOT MANUFACTURE
PARTS TO THIS DRAWING**

SPECIFICATIONS SUBJECT TO CHANGE WITHOUT NOTICE
DIMENSIONS ARE FOR REFERENCE ONLY

| | S1 | S2 |
|-----------------|---------------------|---------------------|
| SHAPE | PLANO | PLANO |
| SURFACE QUALITY | 60-40 | 60-40 |
| CLEAR APERTURE | Ø 27.00 | Ø 27.00 |
| BEVEL | PROTECTED AS NEEDED | PROTECTED AS NEEDED |



ALL DIMS IN mm

Edmund Optics®

TITLE

30mm Dia., 2mm Thick, VIS-NIR Coated
λ/4 N-BK7 Window

DWG NO

23409

SHEET
39 OF 84