

NOTES:

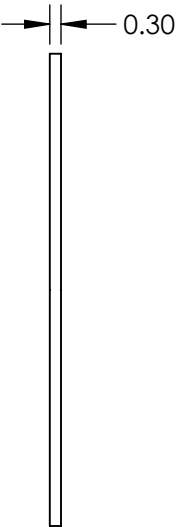
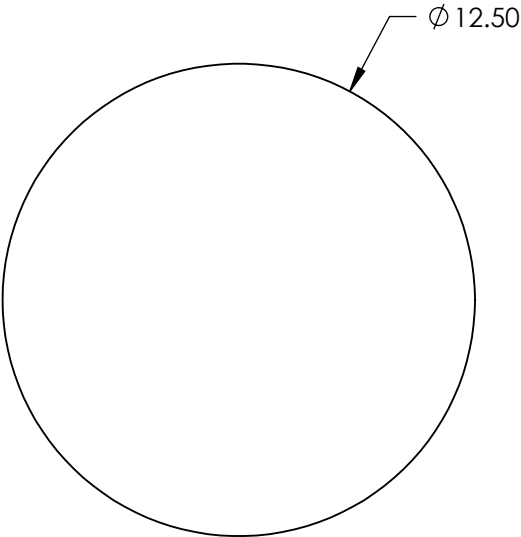
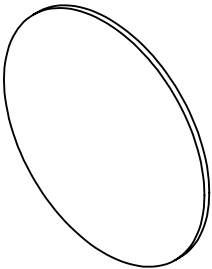
1. COATING

PERFORMANCE SPECIFICATIONS:

CWL: 633nm  
TRANSMISSION %: >85

2. POWER, IRREGULARITY, AND SURFACE QUALITY SPECIFICATIONS  
APPLY ACROSS CLEAR APERTURE

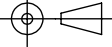
3. ROHS COMPLIANT



**FOR INFORMATION ONLY:  
DO NOT MANUFACTURE  
PARTS TO THIS DRAWING**

SPECIFICATIONS SUBJECT TO CHANGE WITHOUT NOTICE  
DIMENSIONS ARE FOR REFERENCE ONLY

**EO**® **Edmund Optics®**

	S1	S2	THIRD ANGLE PROJECTION 		TITLE	Everix Ultra-Thin OD 4 Notch Filter, 633nm, 12.5mm Diameter	
SHAPE	PLANO	PLANO	ALL DIMS IN	mm	DWG NO	23679	SHEET 8 OF 15
CLEAR APERTURE	Ø 11.25	Ø 11.25					