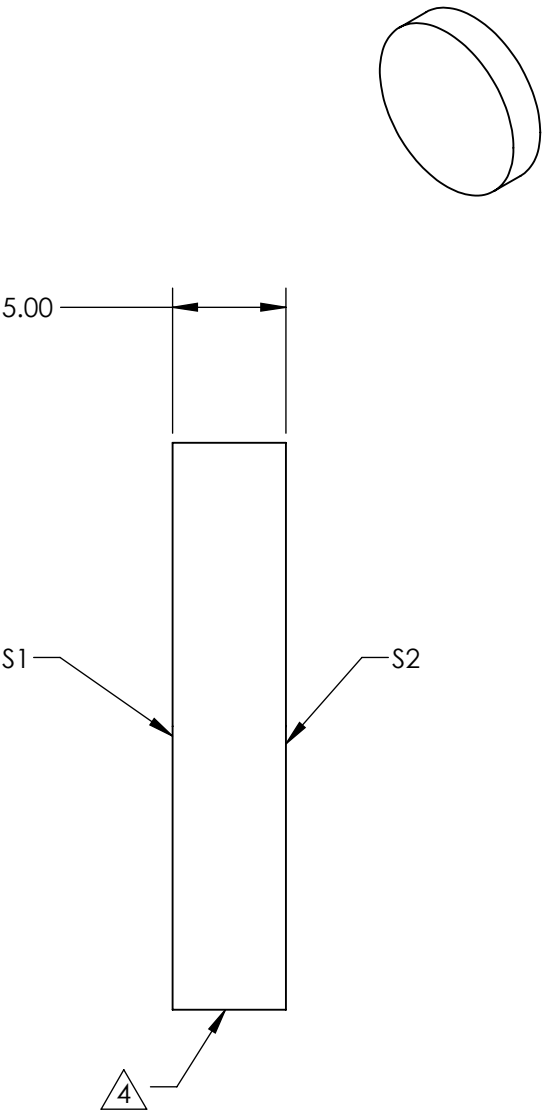
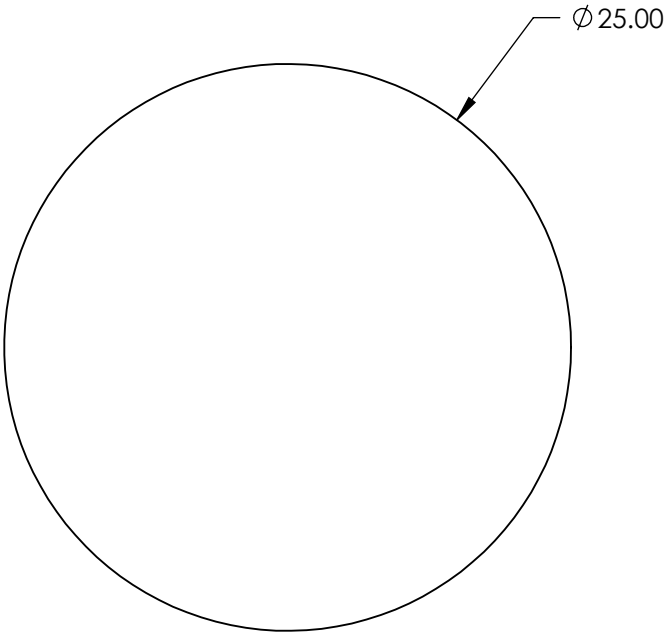


- NOTES:
- 1. SUBSTRATE MATERIAL:
GERMANIUM
 - 2. SURFACE S2 TO BE PARALLEL TO SURFACE S1 WITHIN 1 ARCMIN
 - 3. COATING(APPLY ACROSS CLEAR APERTURE)
S1 & S2: Ravg <5.0% @ 3 - 12µm
 - 4. FINE GRIND SURFACE
 - 5. PROTECTIVE BEVEL AS NEEDED

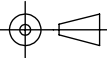


FOR INFORMATION ONLY:
DO NOT MANUFACTURE
PARTS TO THIS DRAWING

SPECIFICATIONS SUBJECT TO CHANGE WITHOUT NOTICE
DIMENSIONS ARE FOR REFERENCE ONLY

| | S1 | S2 |
|----------------------------------|---------|---------|
| SHAPE | PLANO | PLANO |
| SURFACE ACCURACY AT 10.6µm (P-V) | λ/10 | λ/10 |
| SURFACE QUALITY | 60-40 | 60-40 |
| CLEAR APERTURE | Ø 22.50 | Ø 22.50 |

THIRD ANGLE
PROJECTION



ALL DIMS IN

mm



Edmund Optics®

TITLE

25mm Dia. x 5.0mm Thick 3-12µm AR
Coated, Ge Window

DWG NO

23149

SHEET
5 OF 12