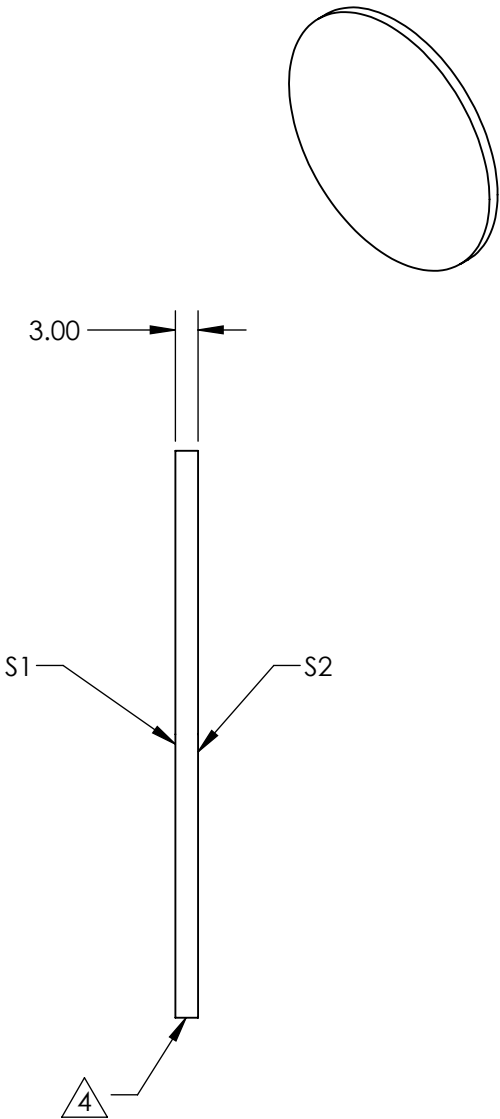
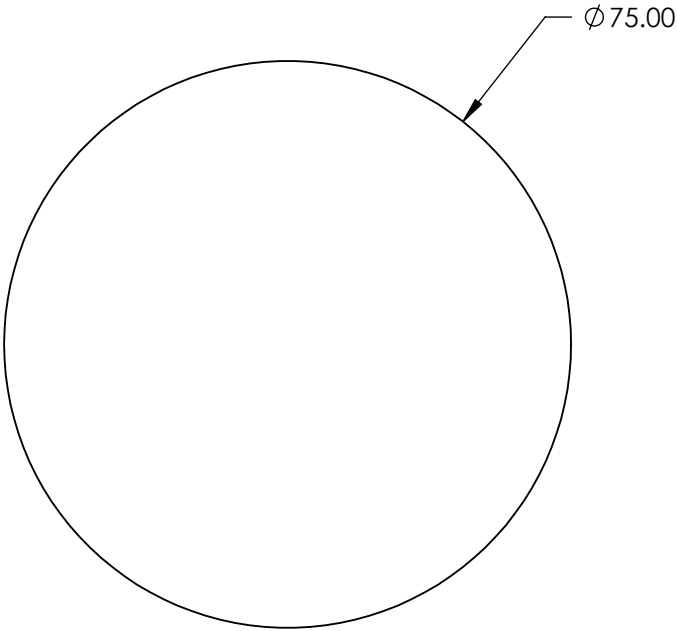


NOTES:

- 1. SUBSTRATE MATERIAL:
GERMANIUM
- 2. SURFACE S2 TO BE PARALLEL TO SURFACE S1 WITHIN 1 ARCMIN
- 3. COATING(APPLY ACROSS CLEAR APERTURE)
S1 & S2: Ravg <3.0% @ 8 - 12µm
- 4. FINE GRIND SURFACE
- 5. PROTECTIVE BEVEL AS NEEDED



FOR INFORMATION ONLY:
DO NOT MANUFACTURE
PARTS TO THIS DRAWING

SPECIFICATIONS SUBJECT TO CHANGE WITHOUT NOTICE
DIMENSIONS ARE FOR REFERENCE ONLY

| | S1 | S2 |
|----------------------------------|---------|---------|
| SHAPE | PLANO | PLANO |
| SURFACE ACCURACY AT 10.6µm (P-V) | λ/10 | λ/10 |
| SURFACE QUALITY | 60-40 | 60-40 |
| CLEAR APERTURE | Ø 67.50 | Ø 67.50 |



ALL DIMS IN mm

Edmund Optics®

TITLE

75mm Dia. x 3.0mm Thick 8-12µm AR
Coated, Ge Window

DWG NO

23158

SHEET
12 OF 12