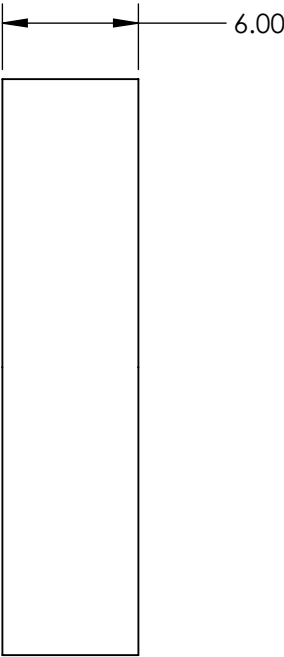
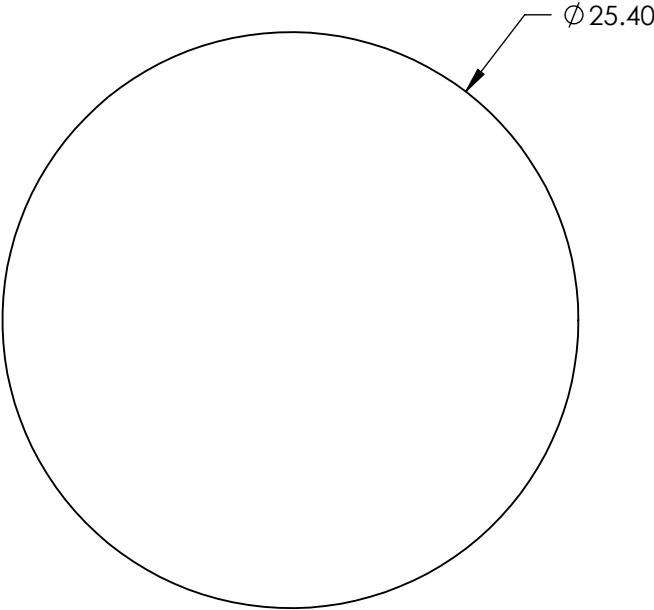
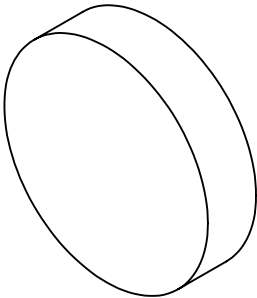


NOTES:

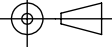
- 1. SUBSTRATE:
CRYSTALLINE QUARTZ
- 2. COATING (APPLY ACROSS COATING APERTURE):
S1 & S2: R<0.5% @ 800 + 400nm

DAMAGE THRESHOLD, PULSED:
>5 J/cm² @ 1064nm; 10 ns; 10 Hz
- 3. SURFACE S1 TO BE PARALLEL TO SURFACE S2 TO WITHIN <30 ARCSEC
- 4. RETARDANCE: $\lambda/2$ @ 400, $\lambda/4$ @ 800
RETARDANCE ORDER: MULTIPLE
- 5. DESIGN WAVELENGTH: 400nm, 800nm
- 6. TRANSMITTED WAVEFRONT: $<\lambda/10$ @ 632.8nm
- 7. ROHS COMPLIANT



FOR INFORMATION ONLY:
DO NOT MANUFACTURE
PARTS TO THIS DRAWING

SPECIFICATIONS SUBJECT TO CHANGE WITHOUT NOTICE
DIMENSIONS ARE FOR REFERENCE ONLY

	S1	S2	<div>THIRD ANGLE PROJECTION</div> 				<div>Edmund Optics®</div> <div>25.4mm Dia., $\lambda/2$ at 400nm and $\lambda/4$ at 800nm, Dual Wavelength Waveplate</div>	
SURFACE QUALITY	20-10	20-10						
CLEAR APERTURE	Ø 18.00	Ø 18.00	ALL DIMS IN	mm	DWG NO	23834	SHEET 5 OF 6	