

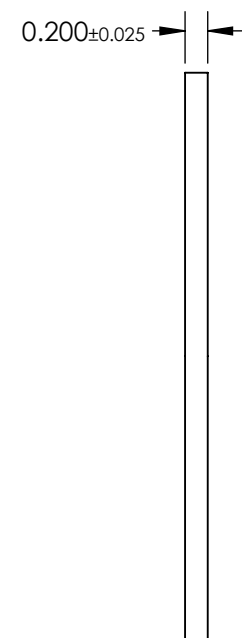
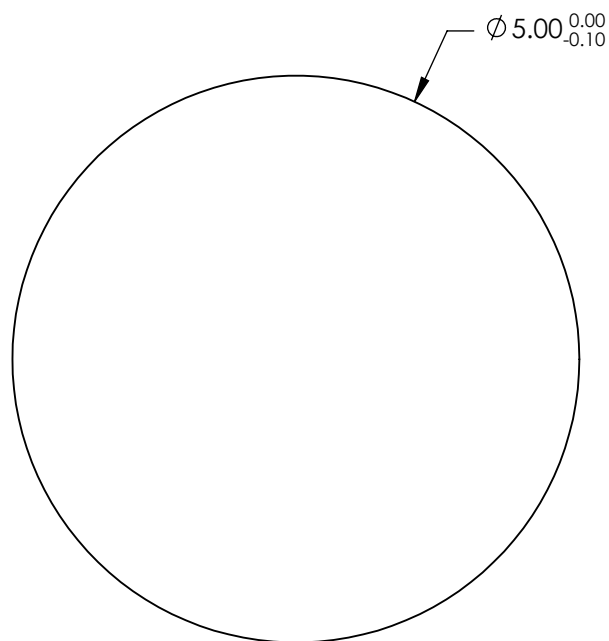
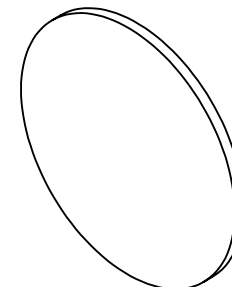
1. SUBSTRATE:  
N-BK7

### 3. COATING (APPLY ACROSS CLEAR APERTURE)

S1&S2:  $R_{avg} \leq 0.5\%$  @ 600 - 1050nm

#### 4. FINE GRIND SURFACE

## 5. ROHS COMPLIANT



**FOR INFORMATION ONLY:  
DO NOT MANUFACTURE  
PARTS TO THIS DRAWING**

SPECIFICATIONS SUBJECT TO CHANGE WITHOUT NOTICE  
DIMENSIONS ARE FOR REFERENCE ONLY

	S1	S2
SHAPE	PLANO	PLANO
SURFACE QUALITY	20-10	20-10
WAVELENGTH RANGE	600-1050nm	600-1050nm
BEVEL	PROTECTED AS NEEDED	PROTECTED AS NEEDED

THIRD ANGLE PROJECTION

ALL DIMS IN	mm
-------------	----

 Edmund Optics®

TITLE

5mm Diameter NIR I Coated, Ultra-Thin N-BK7 Window

DWG NO

22044

SHEET  
1 OF 8