

NOTES:

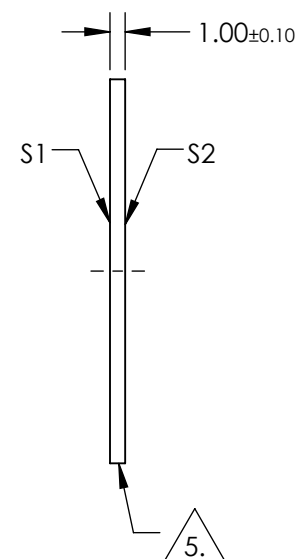
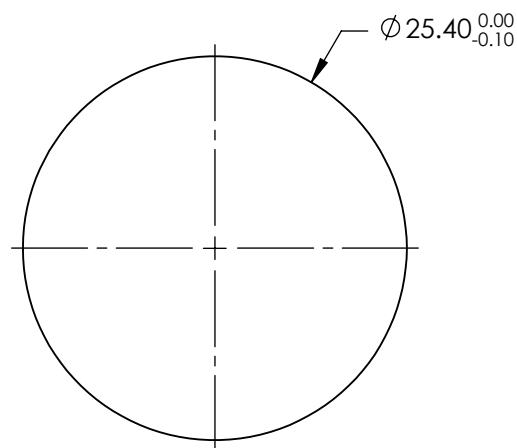
1. SUBSTRATE:  
SUPRASIL® 300
2. SURFACE S2 TO BE PARALLEL TO SURFACE S1 TO WITHIN < 5 ARCSEC
3. COATING (APPLY ACROSS COATING APERTURE)

S1 & S2: NIR II  
 $R(ABS) \leq 1.5\%$  FROM 750-800nm  
 $R(ABS) \leq 1.0\%$  FROM 800-1550nm  
 $R(AVG) \leq 0.7\%$  FROM 750-1550nm

4. TRANSMITTED WAVEFRONT DISTORTION P-V:  $\leq 0.10$  WAVE @ 632.8nm


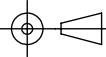
 FINE GRIND SURFACE

6. ROHS COMPLIANT



**FOR INFORMATION ONLY:  
DO NOT MANUFACTURE  
PARTS TO THIS DRAWING**

SPECIFICATIONS SUBJECT TO CHANGE WITHOUT NOTICE  
 DIMENSIONS ARE FOR REFERENCE ONLY

	S1	S2				
SHAPE	PLANO	PLANO				
SURFACE QUALITY	10-5	10-5		TITLE	25.4mm Dia., 1mm Thick, NIR II Coated Suprasil Window	
WAVELENGTH RANGE	750 - 1550nm	750 - 1550nm				
BEVEL	PROTECTIVE AS NEEDED	PROTECTIVE AS NEEDED	ALL DIMS IN	mm	DWG NO	25593
					SHEET 1 OF 1	