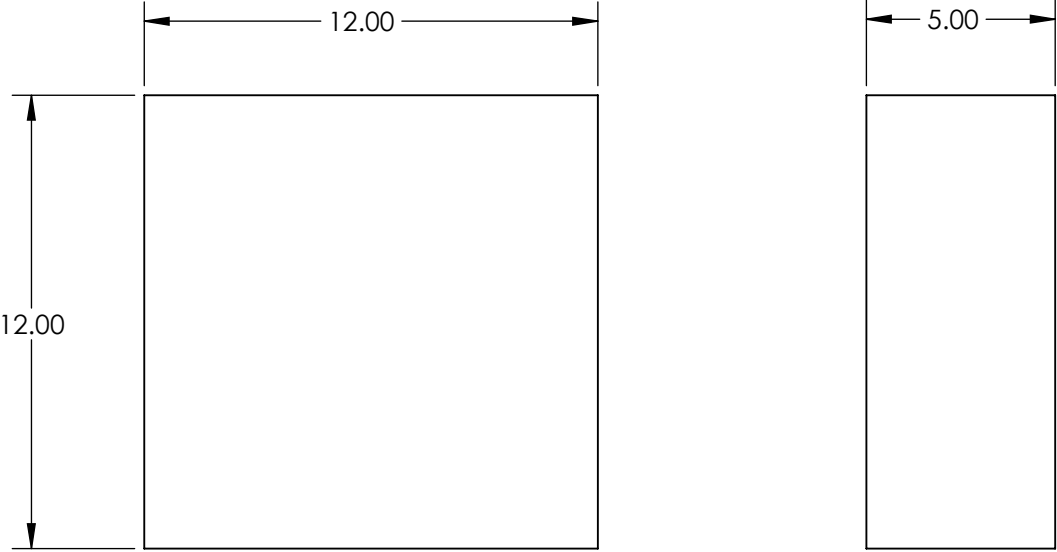
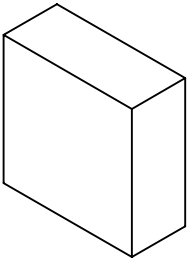

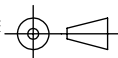
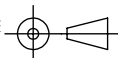


- NOTES:
- 1. CRYSTAL TYPE: BBO
  - 2. SURFACE S2 TO BE PARALLEL TO SURFACES S1 TO WITHIN <10 ARCSEC
  - 3. COATING (APPLY ACROSS CLEAR APERTURE)
    - S1: 266 & 532nm AR Coating
    - S2: 266 & 532nm AR Coating
  - 4. ORIENTATION  $\Theta/\phi$  (°): 76.5/45
  - 5. ROHS COMPLIANT



**FOR INFORMATION ONLY:**  
**DO NOT MANUFACTURE**  
**PARTS TO THIS DRAWING**

SPECIFICATIONS SUBJECT TO CHANGE WITHOUT NOTICE  
DIMENSIONS ARE FOR REFERENCE ONLY

	S1	S2	 <b>Edmund Optics®</b>			
SHAPE	PLANO	PLANO				
SURFACE FLATNESS	N/A	N/A				
SURFACE QUALITY	20-10	20-10				
CLEAR APERTURE	>10.8	>10.8				
BEVEL	PROTECTED AS NEEDED	PROTECTED AS NEEDED				
			ALL DIMS IN	mm	DWG NO	24197
			TITLE			12 x 12 x 5, 532nm SHG, Type I KDP Nonlinear Crystal
						SHEET 1 OF 1