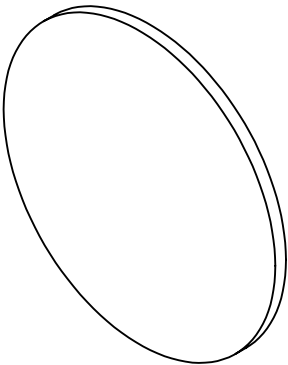
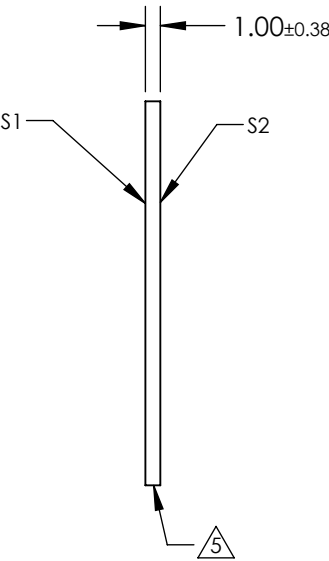
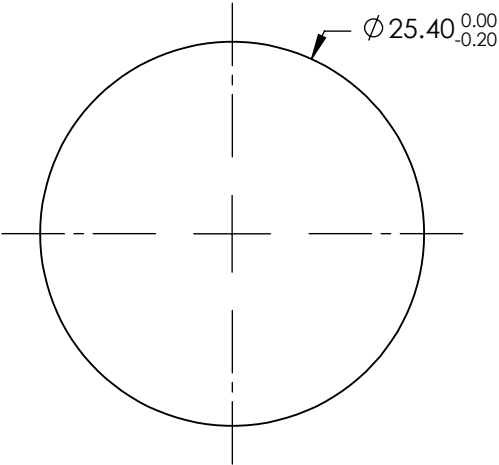


- NOTES:
- 1. SUBSTRATE: Fused Silica (Corning 7980)
 - 2. RoHS COMPLIANT
 - 3. SURFACE S2 TO BE PARALLEL WITH SURFACE S 1 TO WITHIN ACRMINS
 - 4. Coating (Apply Across Clear Aperture):
 - S1 & S2: Rabs ≤1.0% @ 250 - 425nm
 - Ravg ≤0.75% @ 250 - 425nm
 - Ravg ≤0.5% @ 370 - 420nm



5. FINE GROUND SURFACE



**FOR INFORMATION ONLY:
DO NOT MANUFACTURE
PARTS TO THIS DRAWING**

SPECIFICATIONS SUBJECT TO CHANGE WITHOUT NOTICE
DIMENSIONS ARE FOR REFERENCE ONLY

	S1	S2				
Shape	Plano	Plano				
Surface Accuracy	1λ	1λ				
Surface Quality	60-40	60-40				
Clear Aperture	22.86	22.86				
Bevel	Protected as Needed	Protected as Needed				

THIRD ANGLE PROJECTION		TITLE		25.4mm Dia. 1mm Thick UV-AR Coated, 1λ Fused Silica Window	
ALL DIMS IN	mm	DWG NO	25253	SHEET 10 OF 101	

Edmund Optics®