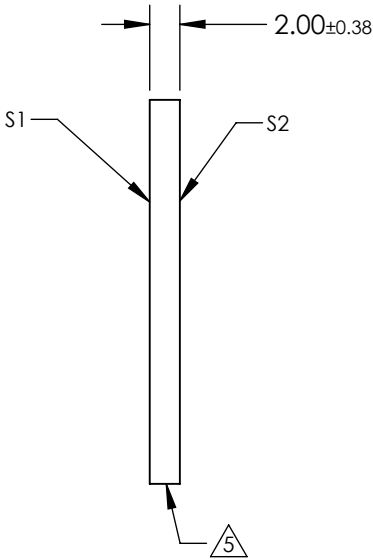
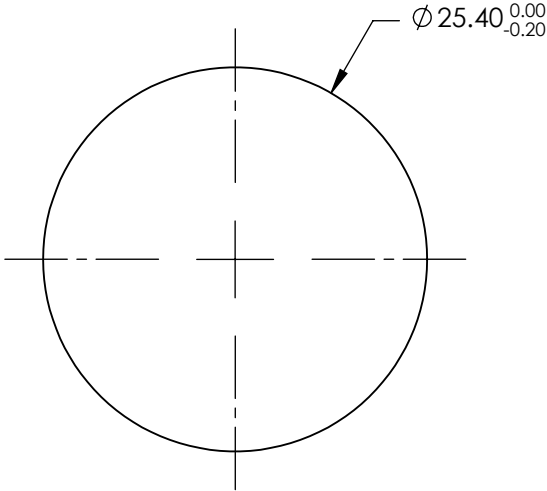


NOTES:

- 1. SUBSTRATE: Fused Silica (Corning 7980)
- 2. RoHS COMPLIANT
- 3. SURFACE S2 TO BE PARALLEL WITH SURFACE S 1 TO WITHIN ACRMINS
- 4. Coating (Apply Across Clear Aperture):
 - S1 & S2: Rabs ≤0.25% @ 880nm
 - Ravg ≤1.25% @ 400 - 870nm
 - Ravg ≤1.25% @ 890 - 1000nm

5. FINE GROUND SURFACE

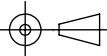


**FOR INFORMATION ONLY:
DO NOT MANUFACTURE
PARTS TO THIS DRAWING**

SPECIFICATIONS SUBJECT TO CHANGE WITHOUT NOTICE
DIMENSIONS ARE FOR REFERENCE ONLY

	S1	S2
Shape	Plano	Plano
Surface Accuracy	1λ	1λ
Surface Quality	60-40	60-40
Clear Aperture	22.86	22.86
Bevel	Protected as Needed	Protected as Needed

THIRD ANGLE
PROJECTION



ALL DIMS IN

mm



Edmund Optics®

TITLE

25.4mm Dia. 2mm Thick VIS-NIR Coated, 1λ
Fused Silica Window

DWG NO

25309

SHEET
66 OF 101