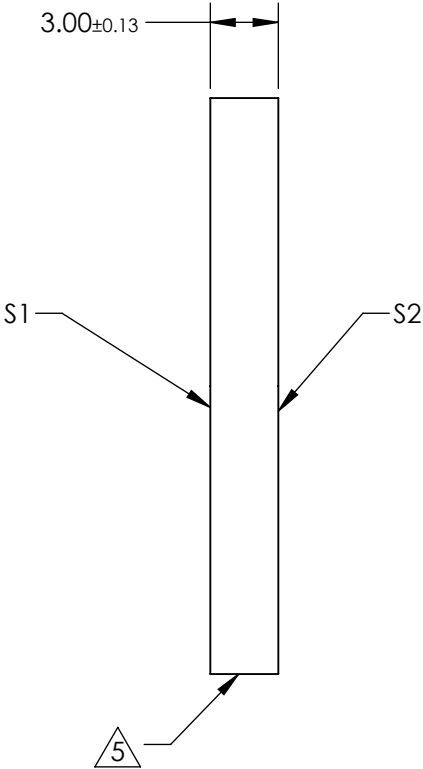
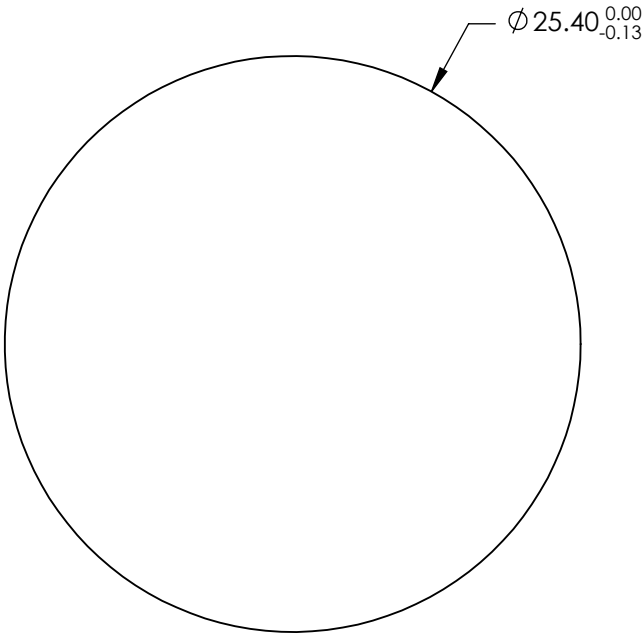


NOTES:

- 1. SUBSTRATE:  
Calcium Fluoride (CaF<sub>2</sub>)
- 2. COATING (APPLY ACROSS CLEAR APERTURE)  
  
S1: 50/50 ± 10% @ 2 - 8µm  
S2: NONE
- 3. ROHS COMPLIANT
- 4. SURFACE S2 TO BE PARALLEL WITH S1 TO <3 ARCMIN

5. FINE GRIND SURFACE



**FOR INFORMATION ONLY:  
DO NOT MANUFACTURE  
PARTS TO THIS DRAWING**

SPECIFICATIONS SUBJECT TO CHANGE WITHOUT NOTICE  
DIMENSIONS ARE FOR REFERENCE ONLY

	S1	S2
SHAPE	PLANO	PLANO
SURFACE QUALITY	60-40	60-40
SURFACE FLATNESS	2λ	2λ
CLEAR APERTURE	ø21.59	ø21.59



ALL DIMS IN mm

**Edmund Optics®**

TITLE 25.4mm Dia., 3mm Thick, 2 - 8µm, ISP Optics  
CaF<sub>2</sub> IR Beamsplitter

DWG NO 25025

SHEET 4 OF 12