

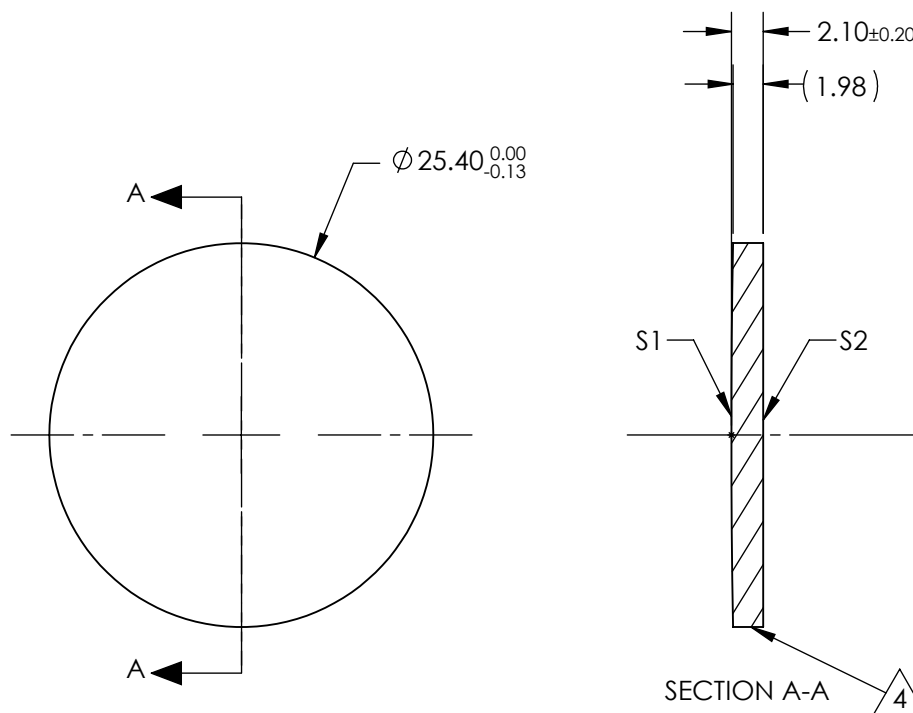
NOTES:

1. SUBSTRATE:  
Zinc Selenide (ZnSe), CVD Grade
2. CENTERING TOLERANCE:  
<3 ARCMIN
3. COATING (APPLY ACROSS CLEAR APERTURE)  
S1 & S2: R(AVG) <0.5% @ 8 - 12µm  
R(ABS) <1% @ 8 - 12µm

4. FINE GRIND SURFACE


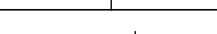
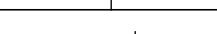
5. FOCAL LENGTH TOLERANCE: ±2%

6. ROHS COMPLIANT



**FOR INFORMATION ONLY:  
DO NOT MANUFACTURE  
PARTS TO THIS DRAWING**

SPECIFICATIONS SUBJECT TO CHANGE WITHOUT NOTICE  
DIMENSIONS ARE FOR REFERENCE ONLY

			EFL @ 10.6μm		500.0		DIMENSIONS ARE FOR REFERENCE ONLY		
SHAPE	S1	S2	BFL @ 10.6μm		496.87		 Edmund Optics®		
RADIUS	698.2	INFINITY			TITLE		25.4mm Dia. x 500mm FL, 8-12μm AR Coated, ISP Optics ZnSe Plano-Convex Lens		
IRREGULARITY AT 10.6μm	λ/20	λ/20							
SURFACE QUALITY	60-40	60-40							
CLEAR APERTURE	ø22.86	ø22.86			DWG NO		24992		
BEVEL	PROTECTED AS NEEDED	PROTECTED AS NEEDED							
			ALL DIMS IN		mm		SHEET 1 OF 1		