

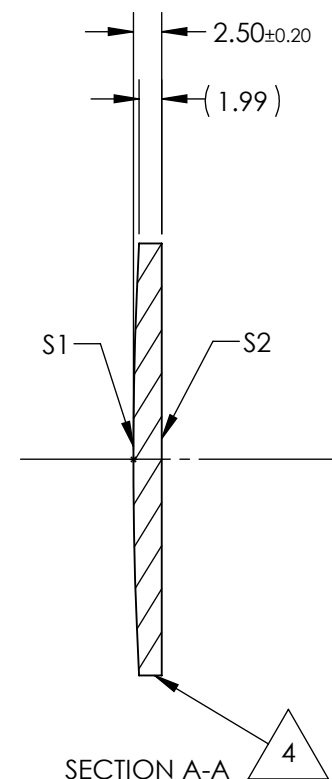
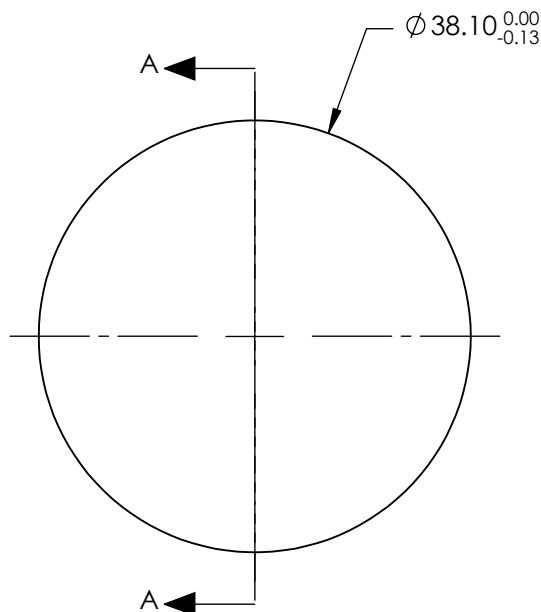
NOTES:

1. SUBSTRATE:
Zinc Selenide (ZnSe), CVD Grade
2. CENTERING TOLERANCE:
<3 ARCMIN
3. COATING (APPLY ACROSS CLEAR APERTURE)
S1 & S2: R(AVG) <0.5% @ 8 - 12 μ m
R(ABS) <1% @ 8 - 12 μ m

4. FINE GRIND SURFACE

5. FOCAL LENGTH TOLERANCE: $\pm 2\%$

6. ROHS COMPLIANT



**FOR INFORMATION ONLY:
DO NOT MANUFACTURE
PARTS TO THIS DRAWING**

SPECIFICATIONS SUBJECT TO CHANGE WITHOUT NOTICE
DIMENSIONS ARE FOR REFERENCE ONLY

			EFL @ 10.6μm		254.0		DIMENSIONS ARE FOR REFERENCE ONLY		
SHAPE	S1	S2	BFL @ 10.6μm		253.13		Edmund Optics®		
RADIUS	CONVEX	PLANO					38.1mm Dia. x 254mm FL, 8-12μm AR Coated, ISP Optics ZnSe Plano-Convex Lens		
IRREGULARITY AT 10.6μm	356.5	INFINITY							
SURFACE QUALITY	λ/20	λ/20	THIRD ANGLE PROJECTION				TITLE		
CLEAR APERTURE	60-40	60-40							
BEVEL	ø34.29	ø34.29							
	PROTECTED AS NEEDED	PROTECTED AS NEEDED	ALL DIMS IN		mm		DWG NO		
							25000		
							SHEET 1 OF 1		