

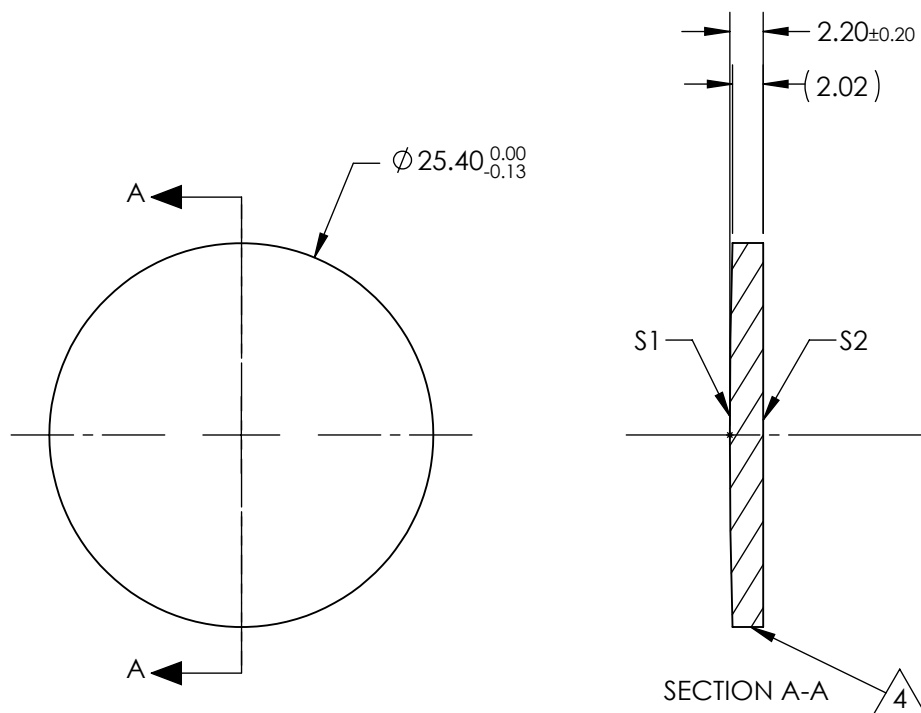
NOTES:

1. SUBSTRATE:  
Germanium (Ge)
2. CENTERING TOLERANCE:  
<3 ARCMIN
3. COATING (APPLY ACROSS CLEAR APERTURE)  
S1 & S2: R(AVG) <5.0% @ 3 - 12 $\mu$ m

4. FINE GRIND SURFACE


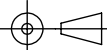
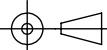
5. FOCAL LENGTH TOLERANCE:  $\pm 2\%$

6. ROHS COMPLIANT



**FOR INFORMATION ONLY:  
DO NOT MANUFACTURE  
PARTS TO THIS DRAWING**

SPECIFICATIONS SUBJECT TO CHANGE WITHOUT NOTICE  
DIMENSIONS ARE FOR REFERENCE ONLY

	S1	S2	EFL @ 10.6 $\mu$ m	150.0	 <b>Edmund Optics®</b>		
SHAPE	CONVEX	PLANO	BFL @ 10.6 $\mu$ m	150.22			
RADIUS	452.9	INFINITY			TITLE	25.4mm Dia. x 152.4mm FL, 3 - 12 $\mu$ m Coated, ISP Optics Germanium (Ge) PCX Lens	
IRREGULARITY AT 10.6 $\mu$ m	$\lambda/20$	$\lambda/20$					
SURFACE QUALITY	60-40	60-40			DWG NO	24875	
CLEAR APERTURE	$\varnothing 22.86$	$\varnothing 22.86$					
BEVEL	PROTECTED AS NEEDED	PROTECTED AS NEEDED	ALL DIMS IN	mm			SHEET 1 OF 1