

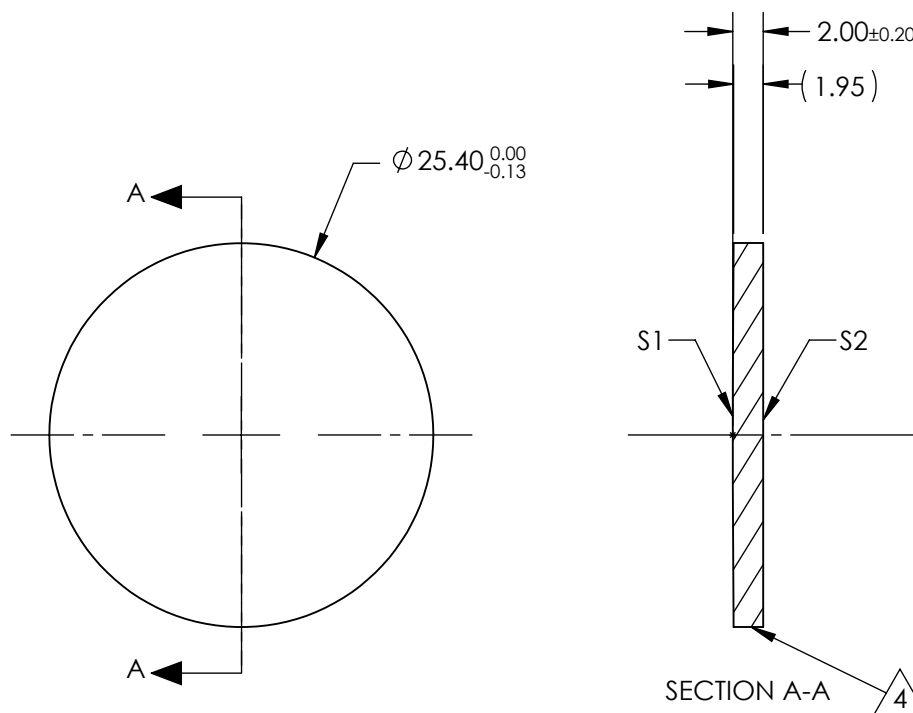
NOTES:

1. SUBSTRATE:
Germanium (Ge)
2. CENTERING TOLERANCE:
<3 ARCMIN
3. COATING (APPLY ACROSS CLEAR APERTURE)
S1 & S2: R(AVG) <5.0% @ 3 - 12 μ m

4. FINE GRIND SURFACE


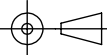
5. FOCAL LENGTH TOLERANCE: $\pm 2\%$

6. ROHS COMPLIANT



**FOR INFORMATION ONLY:
DO NOT MANUFACTURE
PARTS TO THIS DRAWING**

SPECIFICATIONS SUBJECT TO CHANGE WITHOUT NOTICE
DIMENSIONS ARE FOR REFERENCE ONLY

	S1	S2	EFL @ 10.6 μ m	500.0	 Edmund Optics®		
SHAPE	CONVEX	PLANO	BFL @ 10.6 μ m	498.86			
RADIUS	1500	INFINITY			TITLE	25.4mm Dia. x 500mm FL, 3 - 12 μ m Coated, ISP Optics Germanium (Ge) PCX Lens	
IRREGULARITY AT 10.6 μ m	$\lambda/20$	$\lambda/20$					
SURFACE QUALITY	60-40	60-40	ALL DIMS IN		DWG NO	24878	
CLEAR APERTURE	$\varnothing 22.86$	$\varnothing 22.86$					
BEVEL	PROTECTED AS NEEDED	PROTECTED AS NEEDED	mm				SHEET 1 OF 1