

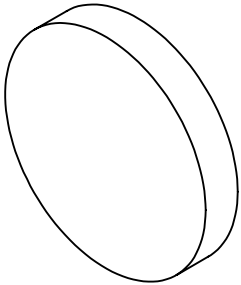
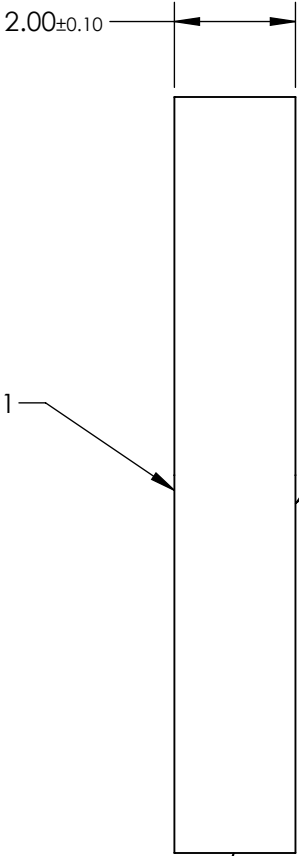
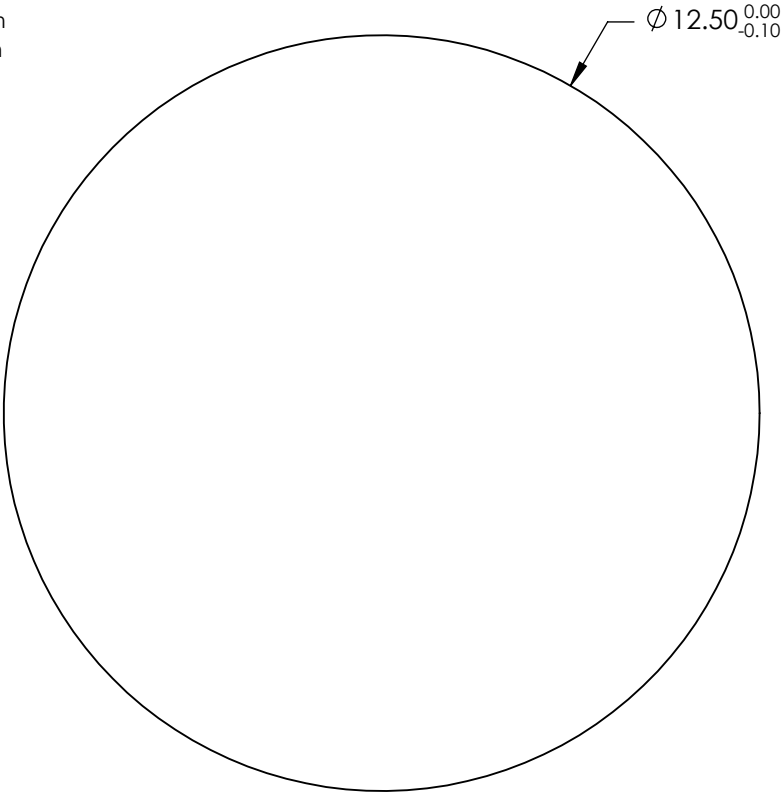
NOTES:

- 1. SUBSTRATE:  
ZINC SELENIDE
- 2. SURFACE S2 TO BE PARALLEL WITH S1 TO <1 arcmin
- 3. COATING (APPLY ACROSS CLEAR APERTURE)

S1&S2:  
Ravg <1% @ 1650 - 3000nm  
Rabs <2% @ 1650 - 3000nm

4. FINE GRIND SURFACE

5. ROHS COMPLIANT



**FOR INFORMATION ONLY:  
DO NOT MANUFACTURE  
PARTS TO THIS DRAWING**

SPECIFICATIONS SUBJECT TO CHANGE WITHOUT NOTICE  
DIMENSIONS ARE FOR REFERENCE ONLY

	S1	S2
SHAPE	PLANO	PLANO
SURFACE FLATNESS	$\lambda/10$ @ 10.6 $\mu$ m	$\lambda/10$ @ 10.6 $\mu$ m
SURFACE QUALITY	60-40	60-40
CLEAR APERTURE	$\varnothing 11.25$	$\varnothing 11.25$
BEVEL	PROTECTED AS NEEDED	PROTECTED AS NEEDED



ALL DIMS IN mm

**Edmund Optics®**

TITLE

12.5mm Dia x 2mm Thickness, BBAR (1650-3000nm) Coated, ZnSe Window

DWG NO

24330

SHEET  
4 OF 27