

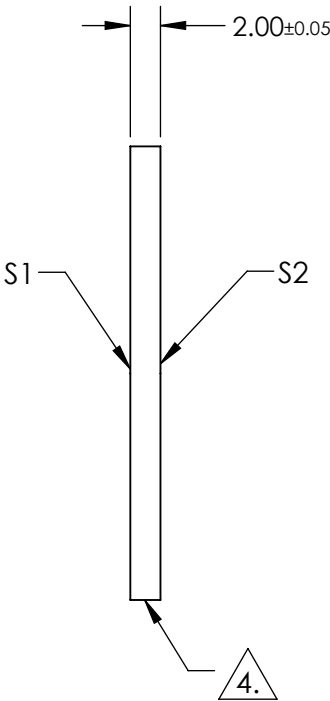
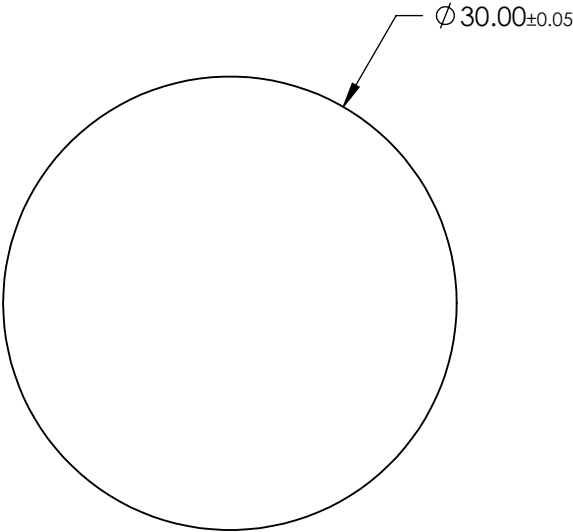
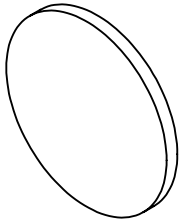
NOTES:
1. SUBSTRATE:
SAPPHIRE (AL2O3)

2. SURFACE S2 TO BE PARALLEL WITH SUFACE S1 TO WITHIN ≤ 3.5 ARMIN

3. COATING (APPLY ACROSS CLEAR APERTURE)
S1 & S2: R(AVG) <1.5% @ 2000-5000nm
R(ABS) <3.0% @ 2000-5000nm
R(AVG) <1.75% @ 2000-4000nm

4. FINE GRIND SURFACE

5. ROHS COMPLIANT

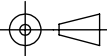


**FOR INFORMATION ONLY:
DO NOT MANUFACTURE
PARTS TO THIS DRAWING**

SPECIFICATIONS SUBJECT TO CHANGE WITHOUT NOTICE
DIMENSIONS ARE FOR REFERENCE ONLY

	S1	S2
SHAPE	PLANO	PLANO
CLEAR APERTURE	$\varnothing 27.00$	$\varnothing 27.00$
SURFACE FLATNESS	2λ	2λ
SURFACE QUALITY	80-50	80-50
BIREFRINGENCE (no-ne)	0.008	0.008
BEVEL	PROTECTED AS NEEDED	PROTECTED AS NEEDED

THIRD ANGLE
PROJECTION



ALL DIMS IN

mm



Edmund Optics®

TITLE

30mm Dia., 2mm Thick, BBAR (2000 - 5000nm)
Coated Sapphire Window

DWG NO

25442

SHEET
67 OF 70