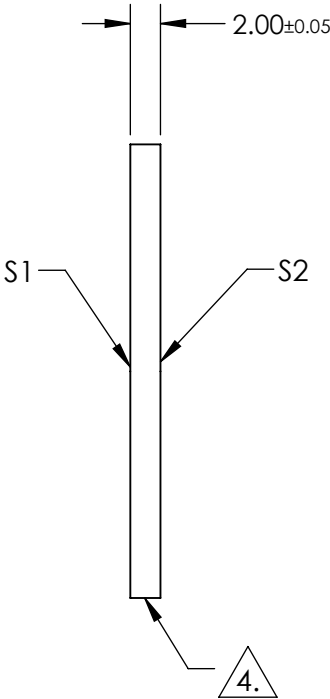
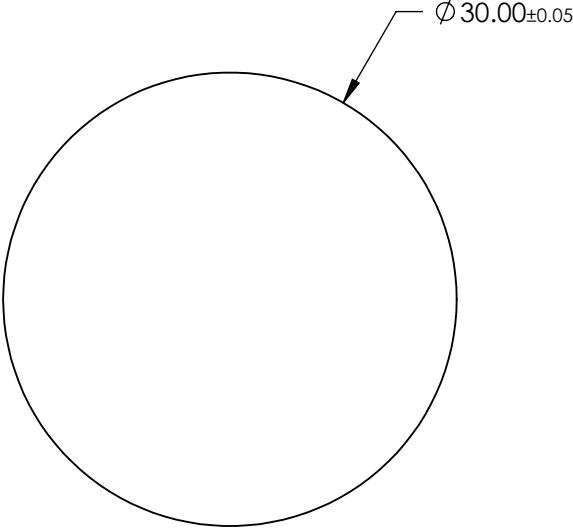
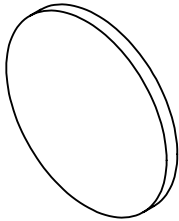


NOTES:

- 1. SUBSTRATE:  
SAPPHIRE (AL2O3)
- 2. SURFACE S2 TO BE PARALLEL WITH SUFACE S1 TO WITHIN  $\leq 3.5$  ARMIN
- 3. COATING (APPLY ACROSS CLEAR APERTURE)  
S1 & S2: R(ABS)  $\leq 1.5\%$  @ 750 - 800nm  
R(ABS)  $\leq 1.0\%$  @ 800 - 1550nm  
R(AVG)  $\leq 0.7\%$  @ 750 - 1550nm

4. FINE GRIND SURFACE

- 5. ROHS COMPLIANT



**FOR INFORMATION ONLY:  
DO NOT MANUFACTURE  
PARTS TO THIS DRAWING**

SPECIFICATIONS SUBJECT TO CHANGE WITHOUT NOTICE  
DIMENSIONS ARE FOR REFERENCE ONLY

	S1	S2
SHAPE	PLANO	PLANO
CLEAR APERTURE	$\varnothing 27.00$	$\varnothing 27.00$
SURFACE FLATNESS	$2\lambda$	$2\lambda$
SURFACE QUALITY	80-50	80-50
BIREFRINGENCE (no-ne)	0.008	0.008
BEVEL	PROTECTED AS NEEDED	PROTECTED AS NEEDED

THIRD ANGLE PROJECTION	
ALL DIMS IN	mm

**Edmund Optics®**

TITLE 30mm Dia., 2mm Thick, NIR II AR Coated  
Sapphire Window

DWG NO 25422

SHEET  
47 OF 70