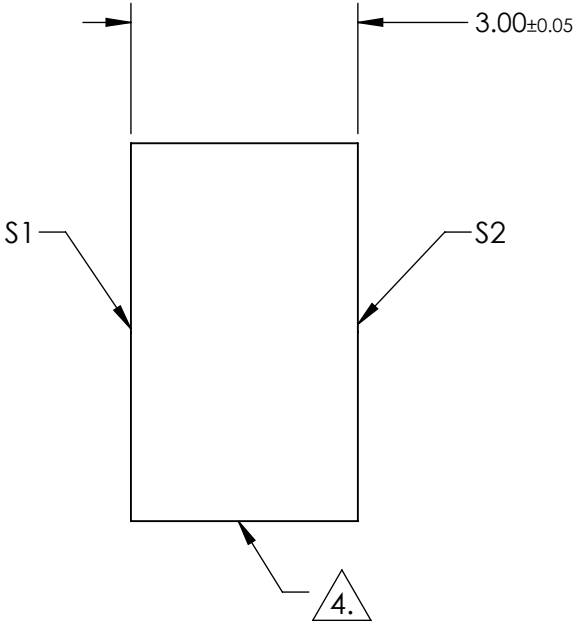
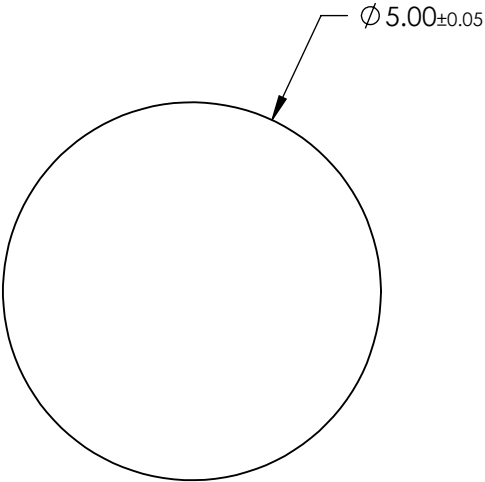
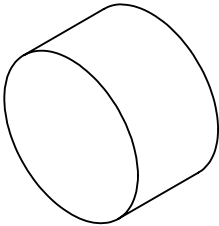


NOTES:

- 1. SUBSTRATE:  
SAPPHIRE (AL2O3)
- 2. SURFACE S2 TO BE PARALLEL WITH SUFACE S1 TO WITHIN  $\leq 3.5$  ARMIN
- 3. COATING (APPLY ACROSS CLEAR APERTURE)  
S1 & S2: R(AVG)  $\leq 0.5\%$  @ 600 - 1050nm

4. FINE GRIND SURFACE

- 5. ROHS COMPLIANT



**FOR INFORMATION ONLY:  
DO NOT MANUFACTURE  
PARTS TO THIS DRAWING**

SPECIFICATIONS SUBJECT TO CHANGE WITHOUT NOTICE  
DIMENSIONS ARE FOR REFERENCE ONLY

|                       | S1                  | S2                  |
|-----------------------|---------------------|---------------------|
| SHAPE                 | PLANO               | PLANO               |
| CLEAR APERTURE        | $\varnothing 4.50$  | $\varnothing 4.50$  |
| SURFACE FLATNESS      | $2\lambda$          | $2\lambda$          |
| SURFACE QUALITY       | 80-50               | 80-50               |
| BIREFRINGENCE (no-ne) | 0.008               | 0.008               |
| BEVEL                 | PROTECTED AS NEEDED | PROTECTED AS NEEDED |



ALL DIMS IN mm

**Edmund Optics®**

TITLE 5mm Dia., 3mm Thick, NIR I AR Coated  
Sapphire Window

DWG NO 25407

SHEET  
32 OF 70