

NOTES:

1. SUBSTRATE:
FUSED SILICA

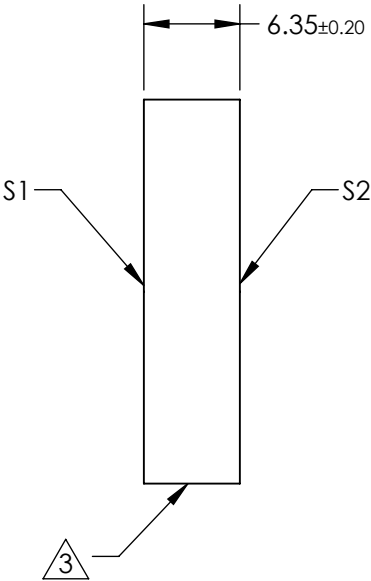
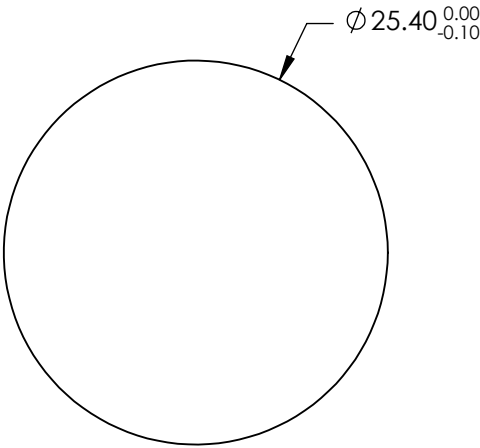
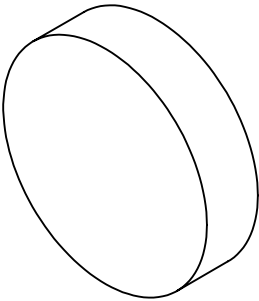
2. COATING (APPLY ACROSS CLEAR APERTURE)
S1: Ultrafast (1510-1590nm)
R(AVG) S&P > 99.90% @ 1550nm
R(AVG)> 99.7% @ 1510 - 1590nm

GDD SPECIFICATION: ±20 fs²@ 1510 - 1590nm @ 45° AOI

S2: NONE

3. FINE GRIND SURFACE

4. ROHS COMPLIANT




**FOR INFORMATION ONLY:
DO NOT MANUFACTURE
PARTS TO THIS DRAWING**

SPECIFICATIONS SUBJECT TO CHANGE WITHOUT NOTICE
DIMENSIONS ARE FOR REFERENCE ONLY

	S1	S2
SHAPE	PLANO	PLANO
SURFACE QUALITY	10 - 5	COMMERCIAL POLISH
CLEAR APERTURE	Ø 22.86	N/A
SURFACE FLATNESS	λ/8	N/A
BEVEL	PROTECTED AS NEEDED	PROTECTED AS NEEDED

THIRD ANGLE
PROJECTION

ALL DIMS IN mm

 **Edmund Optics®**

TITLE	Low-GDD Ultrafast Dielectric Mirror, 1550nm, 45° AOI, 25.4mm Dia., 6.35mm Thick		
DWG NO	26842	SHEET 20 OF 24	