

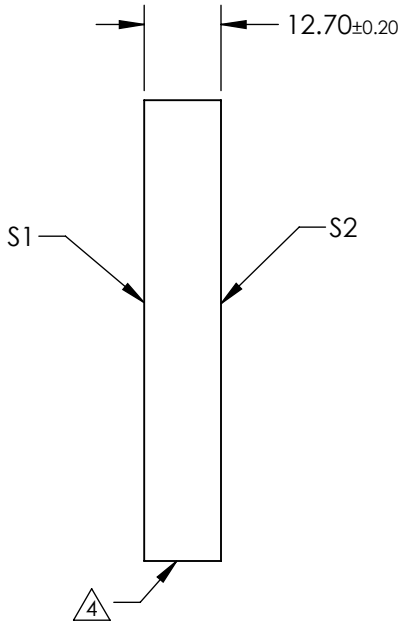
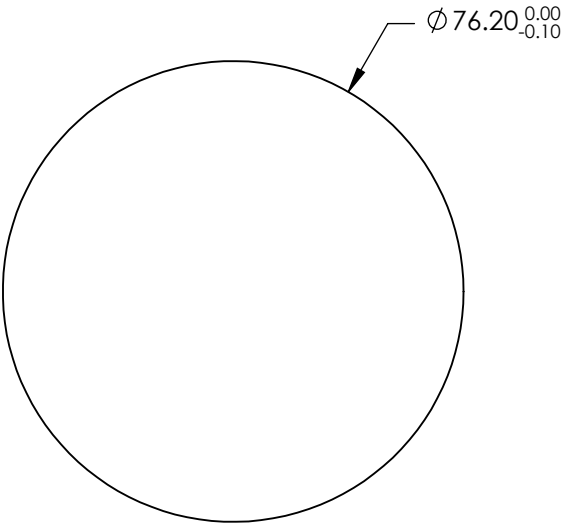
NOTES:

1. SUBSTRATE:
FUSED SILICA
2. S1 TO BE PARALLEL TO S2 TO WITHIN <3 ARMINIS
3. COATING (APPLY ACROSS CLEAR APERTURE)
S1: R(ABS) >99.8% @ 515nm
- DAMAGE THRESHOLD, BY DESIGN
10 J/cm2 @ 515nm, 20ns, 20Hz
- S2: NONE


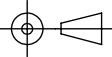
4. FINE GRIND SURFACE

5. CLEAR APERTURE AND COATING APERTURE ARE CENTERED ON SURFACE
6. POWER, IRREGULARITY, AND SURFACE QUALITY SPECIFICATIONS APPLY
ACROSS CLEAR APERTURE
7. ROHS COMPLIANT

**FOR INFORMATION ONLY:
DO NOT MANUFACTURE
PARTS TO THIS DRAWING**



SPECIFICATIONS SUBJECT TO CHANGE WITHOUT NOTICE
DIMENSIONS ARE FOR REFERENCE ONLY

	S1	S2	 Edmund Optics®			
SHAPE	PLANO	PLANO		TITLE	76.2mm Dia. 515nm 0-45°, Yb:YAG Laser Line Mirror	
SURFACE QUALITY	10 - 5	COMMERCIAL POLISH		DWG NO	27035	SHEET 5 OF 9
SURFACE FLATNESS	$\lambda/10$	N/A				
CLEAR APERTURE	Ø 68.58	N/A				
BEVEL	PROTECTED AS NEEDED	PROTECTED AS NEEDED	ALL DIMS IN	mm		