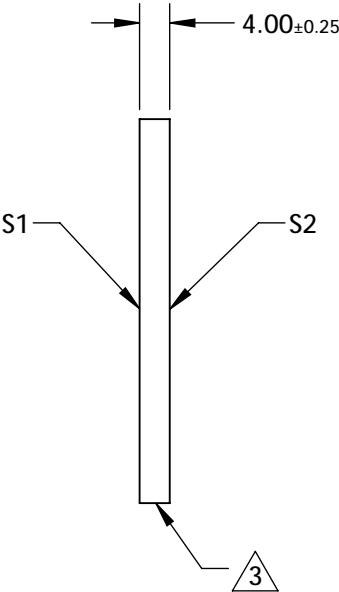
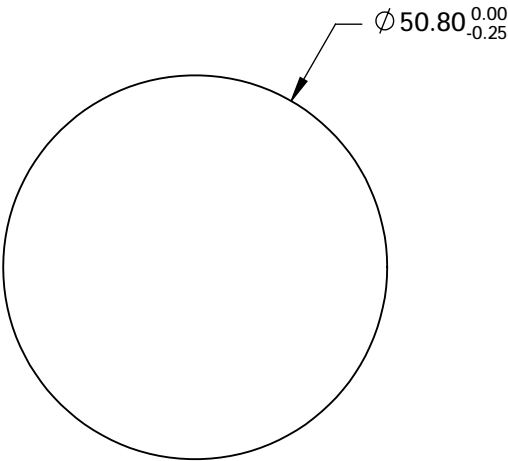
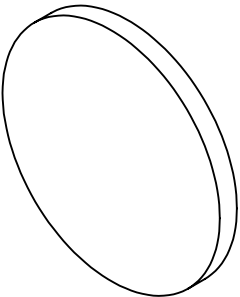


NOTES:

- 1. SUBSTRATE:  
BOROFLOAT®
- 3. COATING  
S1: Enhanced Aluminum (450-650nm)  
R(AVG) >95% @ 450 - 650nm  
  
S2:NONE
- 3. FINE GRIND SURFACE (ADD INK NOTE AS NEEDED)
- 4. ROHS COMPLIANT




**FOR INFORMATION ONLY:  
DO NOT MANUFACTURE  
PARTS TO THIS DRAWING**

SPECIFICATIONS SUBJECT TO CHANGE WITHOUT NOTICE  
DIMENSIONS ARE FOR REFERENCE ONLY

	S1	S2
SHAPE	PLANO	PLANO
SURFACE QUALITY	60 - 40	COMMERCIAL POLISH
CLEAR APERTURE	Ø 45.72	N/A
BEVEL	PROTECTED AS NEEDED	PROTECTED AS NEEDED

THIRD ANGLE  
PROJECTION

ALL DIMS IN      mm

 **Edmund Optics®**

TITLE	50.8mm Dia. Enhanced Aluminum, λ/4 Mirror		
DWG NO	25738	SHEET 9 OF 12	