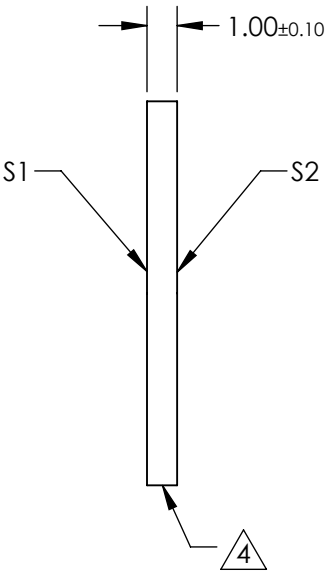
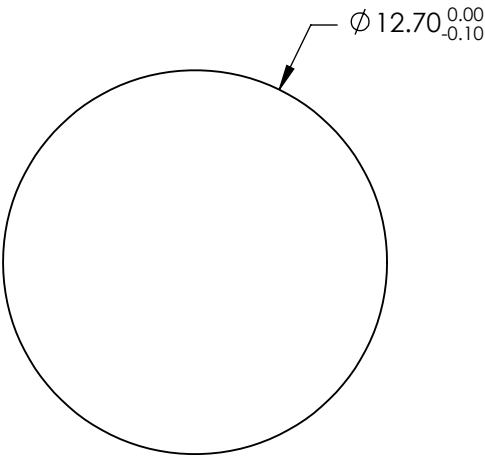
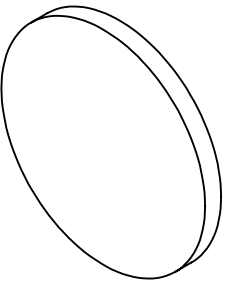


- NOTES:
- 1. SUBSTRATE: FUSED SILICA
 - 2. SURFACE S2 TO BE PARALLEL TO SURFACE S1 TO WITHIN <0.5 ARCMIN
 - 3. COATING (APPLY ACROSS CLEAR APERTURE)
 - S1: Laser V-Coat (355nm)
 - Rabs <0.25% @ 355nm @ 0 ±5° AOI
- DAMAGE THRESHOLD,
PULSED: 7.5 J/cm2 @ 355nm, 20ns, 20Hz
- S2: NONE



4. FINE GRIND SURFACE

5. ROHS COMPLIANT



**FOR INFORMATION ONLY:
DO NOT MANUFACTURE
PARTS TO THIS DRAWING**

SPECIFICATIONS SUBJECT TO CHANGE WITHOUT NOTICE
DIMENSIONS ARE FOR REFERENCE ONLY

	S1	S2			 Edmund Optics®		
SHAPE	PLANO	PLANO	<div>THIRD ANGLE PROJECTION</div> 	TITLE	12.7mm Dia., 1mm Thick, 355nm, Nd:YAG Laser Line Beam Sampler		
SURFACE QUALITY	20 - 10	20 - 10		DWG NO	29011		SHEET 2 OF 8
CLEAR APERTURE	90%	90%					
BEVEL	PROTECTED AS NEEDED	PROTECTED AS NEEDED	ALL DIMS IN	mm			